

ABHILASHI GROUP OF INSTITUTIONS



PROSPECTUS

Website:

www.tramiet.in

www.abhilashi-edu.in

AGI Prospectus

At Counter Rs. 1000/-

By Registered Post Rs. 1150/-

HEAD OFFICE

**NER CHOWK, TEHSIL BALH, DISTT. MANDI
HIMACHAL PRADESH-175008**



Certificate of Registration

This is to certify that

ABHILASHI COLLEGE OF EDUCATION

NER CHOWK, TEH. BALH. DISTT. MANDI (H.P.) - 175008 INDIA

Has been assessed and certified by Mapple Certification
Services as meeting the requirements of:

ISO 9001:2015

Quality Management System

For the following scope of activities:-

**PROVIDING TEACHER TRAINING FOR (B.ED AND D.EL.ED
STUDENTS) IN ENGLISH AND HINDI MEDIUM**

Date Of Registration: 31/05/2022
1st Surveillance Due: 30/05/2023

2nd Surveillance Due: 30/05/2024
Recertification Due: 30/05/2025

Certificate No:- 1080551165

To Verify this certificate please visit at www.mapplecert.de



Authorised Signatory

Mapple Certification Services

Validity of this certificate is subject to Annual Surveillance audits done successfully

This Certificate of Registration remains the Property of Mapple Certification services
and shall be returned immediately upon request

Email: info@mapplecert.de | Website: www.mapplecert.de
Grafestr.4, 10967 Berlin, Germany



ICMPL
INTERNATIONAL

Certificate of Registration

This is to Certify that the
Quality Management System
of

**T. R. ABHILASHI MEMORIAL INSTITUTE OF ENGINEERING AND TECHNOLOGY
TANDA, P.O.BALT (NER CHOWK), DISTT. MANDI -175008, H.P., INDIA**

Has been independently assessed and is compliant
with the requirements of

ISO 9001:2015

This Certificate is applicable to the following product or service ranges :

“Providing Technical Educational Services”

Issue No. 02	:::Certificate No. :: ICM/HP02/976Q	Rev. 00
Certified Since	: Feb 06, 2019	Current Issue Date : Jan 24, 2022
1st Surveillance due on	: Feb 05, 2023	Date of Re-Certification : Feb 06, 2025

(Subject to the company maintaining its system to the required standard)
*After Successful Completion of surveillance audit, New certificate shall be issued.



Certification Manager

(“Further Clarifications regarding the scope of the certificate & the applicability of standard requirements may be obtained by consulting the organization.” “This is an accredited certificate sanctioned for issue by **ACCREDITATION CONFORMITY BOARD FOR CERTIFICATION BODIES (ACBCB)** in accordance with the requirements of ISO/IEC 17021-1:2015. The Validity of the certificate can be verified by checking the Directory of certified organization maintained at the ACBCB Website www.acbcb.org”)

ICM Certification Private Limited

638/262, 1st Floor, Taajpur Pahadi, Jaipur Road, Badarpur, New Delhi-110044, India.

E-mail : info@icmcertification.com / technical@icmcertification.com

*This Certificate is the Property of ICM Certification (P) Ltd. and Shall be Returned Immediately on Request

“ABOUT ABHILASHI GROUP OF INSTITUTIONS”

Abhilashi Group of Institutions, Ner Chowk, Tehsil Balh, Distt. Mandi H.P., is a group of multi disciplinary institutions in the state of Himachal Pradesh. The great visionary late Sh. Tulsi Ram Abhilashi was its founder. Abhilashi Group of Institutions is located at Ner Chowk, Tehsil Balh, Distt. Mandi, Himachal Pradesh and offers graduate and post graduate programme like Pharmacy, Education, Management, Science etc.

Dr. R. K. Abhilashi, who took over the Chairmanship in the year 2005, after the demise of great visionary Sh. Tulsi Ram, realized the need to enhance education facility to more number of promising students in Science & Technology and other various professional courses. Under his patronage, Abhilashi Group of Institutions started expanding by establishing new campuses viz. T.R. Abhilashi Memorial Institute of Engineering & Technology, Abhilashi College of Nursing, both at Tenda, P.O. Bait, Distt. Mandi, H.P, Abhilashi College of Pharmacy, Abhilashi College of Education, Abhilashi P.G. Institute of Sciences at Ner Chowk, Tehsil Balh, Distt. Mandi, H.P., Abhilashi University at Chail Chowk, Tehsil Chachyot, Distt. Mandi H.P. and T.R. Abhilashi Pvt. ITI at Tanda are its latest ventures.

Abhilashi Group of Institutions is ranked No.1 educational group among the private educational institutions in Himachal Pradesh by various media houses.

Abhilashi Group of Institutions has been providing the best ever facilities such as well developed infrastructure, modern library and labs, cafeteria, medical services, hostels, comfortable buses etc to its students in all campuses.

COURSES OFFERED

**T.R. ABHILASHI MEMORIAL
INSTITUTE OF ENGG. & TECH.**

B.TECH **DIPLOMA**
(CE/EE/CSE) (CE/EE)

**T.R. ABHILASHI PRIVATE
ITI**

**ITI in ELECTRICIAN
HEALTH SANITARY INSPECTOR
SOLAR TECHNICIAN (ELECTRICAL)
FITTER**

**ABHILASHI
COLLEGE OF PHARMACY**

B. PHARMACY

**ABHILASHI
P.G. INSTITUTE OF SCIENCES**

**M.Sc in
CHEMISTRY/ BOTANY**

**ABHILASHI
COLLEGE OF NURSING**

**B.Sc. NURSING | M.Sc. NURSING
POST BASIC B.Sc. NURSING
GNM**

**ABHILASHI
COLLEGE OF EDUCATION**

D.EL.Ed B.Ed



Chairman's Message



Welcome to Abhilashi Group of Institutions, Ner Chowk, Tehsil Balh, Distt. Mandi Himachal Pradesh. Established in 2001, with the approval of HP Govt. and other regulatory bodies, Abhilashi Group of Institutions has now become a big brand in the field of education because of its infrastructure, amenities, quality education, dedication of staff and untiring efforts of members of the management which gives the opportunity to aspiring students to study at Abhilashi Group of Institutions and acquire qualifications and knowledge recognized worldwide.

The Abhilashi Group carry forward the charter of the brand 'Abhilashi' and is committed to the highest standards of academic excellence. It provides latest technology and learning tools such as State of the Art class rooms, modern laboratories and a conducive environment to the students to become top technocrats, professionals, entrepreneurs, leaders, researchers and responsible global citizens.

The strong network of the Abhilashi Group of Institutions alumni holding leading positions in industry and academia all over the country are a testimony to the Abhilashi Group of Institutions. Focus of nurturing alumni network also provides immense support to the institution and offers extensive help to our students.

Choosing right institutions for higher education is one of the most significant decisions to shape your career and life. You will find in this booklet all the essential information on Abhilashi Group of Institutions, the programmes offered, admission procedure and other related information.

Also I thank you for choosing Abhilashi Group of Institutions for your higher studies. I on behalf of Abhilashi Group of Institutions assure you that we will not leave any stone unturned in providing you the best possible services.

Dr. R.K. Abhilashi
Chairman
Abhilashi Group of Institutions
Ner Chowk, Distt. Mandi H.P.

Managing Director's Message



Adhering strictly to our motto “Join us to beat the crowd” and following the footprints of our patron Late Sh. Tulshi Ram Abhilashi ji, we, at Abhilashi Group of Institutions, believe that a great responsibility is vested on us as educators of the modern world. Ever since the inception of the group, we have been striving hard to comprehend the broad significance of education while designing our mode of instruction.



We mentor our students to sharpen their intelligence and enable them to accomplish their aspirations. Simultaneously, we install in them a positive value system that shapes their attitude, outlook and conduct that provides a strong foundation for them to tackle the challenges of life.

We have the support of a strong team of faculty members, who whole heartedly put their efforts to motivate our students and guide them to progress at every step. In a conducive learning environment at our serene campus, we nurture champions, who, with intellectual brilliance and ethical excellence, emerge out as leaders with a difference.

With profound gratitude to God and sincere acknowledgement to all our well wishers, we are marching ahead, exploring further opportunities for our students to learn and grow. It is with immense pleasure that I welcome you to the portal of this academic milieu to have a unique educational experience.

Dr. Lalit Kumar Abhilashi
Managing Director
Abhilashi Group of Institution
Ner Chowk, Distt. Mandi H.P.



Secretary's Message

As all of us are aware, Abhilashi Group of Institutions at Ner Chowk, Tehsil Balh, Distt. Mandi is an illustrious institution that has positively shaped the lives of those who have entered its portals. It is a fountainhead of support to many underprivileged students who are in need of education and moral help, as much as it is a perennial spring of learning for other students.



The alumni of Abhilashi Group of Institutions are among the fortunate few who have had the opportunity to blossom in a cosmopolitan ambience amidst a rewarding academic environment. Life at Abhilashi Group of Institutions is an invigorating experience that paves the way for wholesome development of personality. The inspiring academic environment, the comfortable life in the hostels, the warmth and care of the Professors, and the competitive atmosphere of extra-curricular activities nurture the students to shine as leaders in their chosen fields.

The alumni of Abhilashi Group of Institutions are spread out across the country, holding positions of eminence. Here at Abhilashi Group of Institutions, we take utmost care of all our students who hails not only from this part of country but from states like Sikkim, Arunachal, Manipur, Mizoram, Uttar Pradesh, West Bengal, Jharkhand etc. It is assured that we would not leave any stone unturned in shaping your career ahead in higher education.

Narender Kumar
Secretary
Abhilashi Group of Institutions
Ner Chowk, Distt. Mandi H.P.

“ T.R. ABHILASHI MEMORIAL INSTITUTE OF ENGINEERING & TECHNOLOGY ”

Approved By: HP Govt., AICTE and Affiliated to HPTU Hamirpur & HPTSB Dharamshala

Principal's Message

The concept of Engineering has existed since ancient time as human devised fundamental inventions. Inventions are consistent with modern definitions of engineering exploring basic mechanical principle to develop useful tools and objects. Engineering is the discipline, art and profession of acquiring and applying technical, sensitive materials, structure, machines, devices and processes that safely realize a desired objective or invention.

Engineering education must evolve to keep pace with mighty changing occurring today in business, industry and society. Engineers must attribute knowledge beyond traditional constraints of the classroom. Engineering education must accommodate current trends and future needs. We must enhance the flexibility of curricula. Our goal is to articulate the role of engineering education in the early part of the 21st century and to establish design specification that will enable our college to be a leader in shaping the future of engineering education. As such we have an obligation to address the full range of higher education namely teaching and learning, research and service to the community. Indeed these three elements must totally integrate if we are to be efficient in the pursuit of our mission.

Team work and partnerships is another major element in our design of engineering education. The team we organise is a partnership of scientists, engineers, business people and society leaders. It is through these partnerships that the rapid pace in technology and increasing complexity of technology designed to serve society will flourish.

My message for the students who join TRAMIET is:-

- Be flexible in the face of rapid changes in the society & technology.
- Embrace and encourage creative problem solving.
- Facilitate the ability to integrate complex systems and technology.
- Seek partnerships with a variety of engineering and science discipline, with business, with leaders in education, with government and greater community.

I extend a very warm welcome to all the students who wish to join **TRAMIET** from forthcoming academic session. I assure all of you will be fully equipped with state of art theoretical knowledge, innovative and creative practical skills and entrepreneurial attitude to achieve a brilliant success in life.

I wish grand success to all of you and your endeavour of higher technical educational at **TRAMIET**.

Dr. Biplab Sarkar

Principal

T. R. Abhilashi Memorial Institute of Engg. & Technology



“T.R. ABHILASHI MEMORIAL INSTITUTE OF ENGINEERING & TECHNOLOGY”



T. R. Abhilashi Memorial Institute of Engineering & Technology, one of the leading private college's of Himachal Pradesh is located at Tanda, P.O. Balt, Distt Mandi which is 20 kms from Mandi and 5 kms from Nerchowk on Chandigarh –Manali National Highway (NH-21). The campus has been developed in an area of 50 acres in the scenic surrounding with well development computer labs, workshop, laboratories, library, hostels, auditorium, boys and girls common rooms, play ground, medical dispensary etc. The campus has 24*7 internet and power back up facility. All efforts are being made to keep the students in good health and comfort in an atmosphere congenial to studies.

In line with its core philosophy, the entire campus has been designed keeping in mind to provide facilities commensurate with a 21st century modern institute of higher education, in an environment which enhances the learning process. The educational complex includes separate hostel for boys and girls, medical dispensary, fully furnished guest house etc. Industrial/ Plant visits are organized as per need of the curriculum.

COURSES OFFERED:

Sr. No.	Name of Course	Course Duration	Branch	No. of Seats
1	B.Tech	4 years Degree Course	Civil Engineering	60
			Electrical Engineering	30
			Computer Science Engineering	30
2	Diploma in Engineering	3 years Diploma Course	Civil Engineering	30
			Electrical Engineering	30
3	ITI	2 Years Course	Electrician	4 Unit (2+2)
			Fitter	2 Unit (1+1)
		1 Year Course	Health Sanitary Inspector	2 Unit (1+1)
			Solar Technician (Electrical)	2 Unit (1+1)

VISION OF DEPARTMENT

To build a rich intellectual potential embedded with interdisciplinary knowledge, human values and professional ethics among the youth, aspirant of becoming engineers and technologists, so that they contribute to society and create a niche for a successful career.

MISSION OF DEPARTMENT

To become a leading and unique institution of higher learning, offering state-of-the-art education, research and training in engineering and technology to students who are able and eager to become change agents for the industrial and economic progress of the nation. To nurture and sustain an academic ambience conducive to the development and growth of committed professionals for sustainable development of the nation and to accomplish its integration into the global economy.

MATHEMATICS

The Department of mathematics aims at enabling students to find useful solution to the problem advanced learning in science and technology.

ENGLISH

The special emphasis of the department of English is on enabling students to communicate in English and developing communication skills. each and every effort of the department is that the students get the feel of the native speaker pronunciation and can get the exposure to numerous exercises on grammar, vocabulary and pronunciation-practice. In this direction we are going to install the digital multimedia language lab.



PHYSICS

Physics lab is equipped with Desauty Bridge, He-Ne Laser, Photocell, Newton ring Apparatus, CRO, Optical Fiber, Four prove method, Hall effect, Helical method, B-H curve, Sextant, planks constant, polarimeter and various optical and electrical instruments for proper functioning of the laboratories.



CHEMISTRY

The Department of chemistry is equipped with advanced instrument which are well maintained and updated regularly. It is equipped with distillation plant, digital conductivity meter, PH meter, spectrometer, Apparatus for volumetric filtration, Digital weighing balance, Analytic balance. Pinsky-marten flash point apparatus, Redwood viscometer, Heating mantle, Magnetic stirrer, Hot air oven, thermostatic and surgical water bath, Chemical and Glass apparatus etc.



1st & 2nd Semester

Basic Electrical Engg. Lab

Basic Electronics Engg. Lab

Applied Chemistry Lab

Applied Physics Lab

Communication Skills Lab

Computer Programming Lab

VISION OF DEPARTMENT

The plan, construction and repair of the substantial and naturally structure environment like bridges, dams, building railway projects etc. deals with Civil Engineering. We have highly qualified faculty to guide our students to become the best professional with the latest and well-equipped labs and state-of-the-art facilities. The department of civil provides a platform for students to help our modern society through innovative research in technology fields.



3rd Semester

Building Material Lab
Fluid Mechanics Lab
Engineering Surveying Lab-I

4th Semester

Geotechnical Engineering Lab
Engineering Surveying Lab-II
Computer Aided Building Drawing-I

5th Semester

Transportation Engineering Lab
Environmental Engineering Lab
Computer Aided Building Drawing-II

6th Semester

Engineering Geology & Rock Mechanics Lab
Engineering Design Project Lab
Concrete Lab

7th Semester

Computer Applications Lab

8th Semester

Six Months Industrial Training

VISION OF DEPARTMENT

To be a centre of excellence for promoting education training and research in the field of Electrical Engineering.

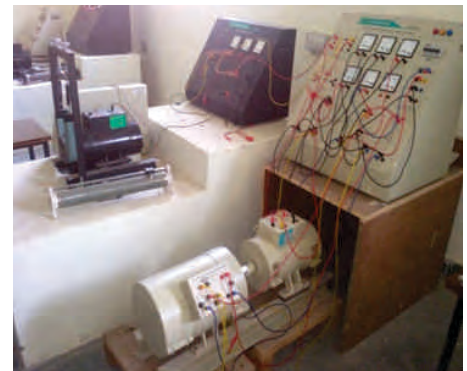
MISSION OF DEPARTMENT

- To offer continuing education and training programs for the faculty and staff of the technical education system in the area of Electrical Engineering.
- To develop need based curriculum for technical education programmer in the field of Electrical Engineering.
- To develop instructional material in the field of Electrical Engineering to enhance effectiveness of teachers learning process.
- To undertake research and development in the area of Electrical Engineering.
- To provide extension and consultancy services to technical education system and industry in the area of Electrical Engineering.



ABOUT THE DEPARTMENT

- Education is all about creating an environment of academic freedom, where bright minds meet, discover and learn. Electrical Engineering is a continuously evolving field with new innovative ideas emerging every other second. As technology has advanced, so have the challenges faced by the fresh engineers and technocrats.
- Electrical Engineering is one discipline that naturally partners with other disciplines to open whole lot of new engineering avenues. Examples include Power Electronics with Power and Electronics Engineering and Bio-medical Sciences with Medicine. It is one of the major departments, created since, the establishment of the institute.
- The department is working with NPTI, NITTTR and other institute of national importance for trainings to provide exposure to students.



3rd Semester

Electrical Machine- I & II Lab
Power Electronics Lab
Digital Electronics Lab

4th Semester

Electrical Measurement
& Measuring Instruments Lab
Electrical Simulation Lab

5th Semester

Linear Control System Lab
Switchgear & Protection Lab

6th Semester

Microprocessors
& Its Applications Lab
Electrical Simulation Lab

7th Semester

Electrical Simulation Lab

8th Semester

Six Months Industrial Training

VISION OF DEPARTMENT

To contribute to the society through excellence in scientific and knowledge based education utilizing the potential of computer science and engineering with a deep passion for wisdom.

MISSION OF DEPARTMENT

- To promote all-round growth of an individual by creating futuristic environment that fosters critical thinking, dynamism and innovation to transform them into globally competitive professionals.
- To undertake collaborative projects which offer opportunities for long-term interaction with academia and industry.
- To develop human potential to its fullest extent so that intellectually capable and optimistic leaders can emerge in a range of professions.

3rd Semester

Data Structures Lab
C++ Programming Lab

4th Semester

Database Management
System Lab

5th Semester

Computer Network Lab
Core Java Lab

6th Semester

Advanced Java Lab
Linux Admin Lab

7th Semester

System And Network
Administration Lab

8th Semester

Six Months Industrial Training



Computer Science and Engineering has been a key field in current time with continuous innovation in this field and it has become field supportive for the other branches of engineering .

COMPUTER PROGRAMMING LAB

Basic computer lab to familiarize with computer configuration, MS Office, Linux, Window and Programming in C. Even Core Java, advanced Java and C++ is taught in this lab. Major projects and Minor projects are also performed by the students for the award of their degree in this stream.



DATA STRUCTURE AND ALGORITHM LAB

Data structure using 'C' is taught in this lab.

RELATIONAL DATABASE MANAGEMENT LAB

To study various databases such as MS Access, SQL Server, Oracle8i and student perform projects using SQL as back end and Visual Basic.net as Front end. Even the students develop their Android apps in this lab using Android Studio. Word Press and other smart tools are also used.



COMPUTER SCIENCE

Internet access to students is provided.

SYSTEM AND NETWORK ADMINISTRATION LAB

In this lab students do configurations of various networking devices and even they test the various protocols. This lab is also used as the Computer network lab.

ARTIFICIAL INTELLIGENCE & PL/SQL LAB

Students are taught to write programs in prolog & PL/SQL in this lab.

Departments & Laboratories of Diploma in Engineering

Department of Applied Science & Humanities

1st & 2nd Semester

Communication Skills in English
Applied Chemistry
Introduction to IT System
Fundamentals of Electrical & Electronics Eng.

Applied Physics
Engineering Workshop Practices
Student Centered Activities
Health & Yoga
Engineering Mechanics

Department of Civil Engineering

3rd Semester

Construction Material Lab
Geotechnical Engg. Lab Basic Surveying Lab
Concrete Technology Lab

4th Semester

Hydraulics Lab Advanced Surveying Lab
Building Planning & Drawing Lab
Transportation Engineering Lab

5th Semester

RCC Drawing & Detailing Minor Project
Highway Engineering Lab Industrial Training
Computer Application in Civil Engineering
Survey Camp

6th Semester

Steel Structure Design & Drawing
Practices in Communication Skills
Major Project

Department of Electrical Engineering

3rd Semester

Introduction to Electrical Generation System Laboratory
Electrical Circuits Laboratory
Electrical and Electronics Measurement Laboratory
Electrical Motors and Transformers Laboratory
Electronics Devices and Circuits Laboratory

4th Semester

Electrical Power Transmission and Distribution Laboratory
Induction, Synchronous and Special Electric Machines
Laboratory
i) Fundamentals of Power Electronics Laboratory
ii) Electrical Estimating And Contracting
iii) Minor Project

5th Semester

Electrical Machine Lab
Power Electronics & Control of Drives
Non-Conventional Energy Resources

6th Semester

Electrical Power System III
Testing & Maintenance of Electrical Machines
Major Project
Practice in Communication Skills

VISION OF DEPARTMENT

This Industrial Training Center is fully committed to explore the skills and abilities of the students so that they can bring out their best in their academic career. It supports individual beliefs, academic freedom, equal opportunities & to be a centre of excellence in technical and industrial education.

MISSION OF DEPARTMENT

The mission of T.R. Abhilashi Pvt. Industrial Training Institute is to develop and enhance the technical skills of the students so that they can use them in the best way to build a successful career. We aim to provide them a quality education, to serve the nation.

QUALITY POLICY

We are aimed at creating skilled technicians who can contribute to the highly dynamic and competitive world of technology.



UNLEASH YOUR POTENTIAL AT T.R. ABHILASHI PVT. ITI

Embark on a transformative journey towards a successful career with T.R. Abhilashi Pvt. ITI. We are proud to offer comprehensive and industry-focused programs in Electrician, Fitter, Health Sanitary Inspector, Solar Technician trades. Prepare to thrive in the dynamic world of skilled trades and secure a bright future filled with endless opportunities.

ITI STREAMS

Electrician Trade (2 Years):

Ignite your passion for electrical work with our Electrician Trade. Gain hands-on experience in installing, maintaining, and troubleshooting electrical systems. From residential wiring to industrial power distribution, our program equips you with the skills and knowledge to excel in this high-demand field.

Fitter Trade (2 Years):

Shape the future of infrastructure with our Fitter Trade. Learn to create precise technical drawings, pipe fitting, welding, lathe machine fitting for private and govt. sector infrastructure. our trade equips you with the skills to contribute to the development of our cities and beyond.

Health sanitary Inspector Trade (1 Year):

Rev up your career with our Health sanitary inspector trade. Government departments include departments like Municipal Corporations, Nagar Palikas, Railways, Hospitals, Cantonment Area, Government Institutes, Oil Refineries, and Factories etc. In the private organizations they work with Hospitals, Hotel, Metal Industry, Chemical Industry, Textile Industry, Food Industry, Travel and Entertainment Industry, Electrical Industry etc.

Solar Technician (Electrical):

Ignite your passion for electrical work with our Solar Electrician Trade for Green Energy . Gain hands-on experience in installing, maintaining, and troubleshooting Solar electrical systems. From residential wiring to industrial power distribution, our program equips you with the skills and knowledge to excel in this high- demand field of Green Energy.

Why Choose T.R. Abhilashi Pvt. ITI ?

Industry-Relevant Curriculum: Our trades are meticulously designed to meet the latest industry standards, ensuring that you acquire the skills employers seek.

State-of-the-Art Facilities:

Train in our modern workshops and labs, equipped with cutting-edge technology, enabling you to gain hands-on experience in a simulated industry environment.

Career Support:

Benefit from our dedicated placement cell, providing guidance and assistance in connecting you with job opportunities. We are committed to your success after completing ITI from our Institute.

Experienced Faculty:

Learn from our experienced instructors who bring their industry expertise and real-world insights into the classroom, nurturing your growth and development.

Practical Training:

We emphasize practical learning through workshops, industry visits, and internships, allowing you to apply your knowledge and improve your skills.



Teaching Staff in T.R. Abhilashi Memorial Institute of Engg. & Technology

S.No.	Name	Designation	Department	Qualification
1.	Dr. Biplob Kumar Sarkar	Principal cum Professor	CSE	Ph. D, M. Tech
2.	Er. M .L. Modgil	Principal (Polytechnic) Vice Principal (B. Tech)	ME	B.Tech, MBA
3.	Er. Bodh Raj Thakur	HOD cum Associate Professor	CSE	B. Tech, M. Tech
4.	Er. Kritika Kapoor	Asst Professor	CSE	B. Tech, M. Tech
5.	Er. Pallavi Sharma	Asst Professor	CSE	B. Tech, M. Tech
6.	Er. Divya Jyoti	Asst Professor	CSE	B.Tech, M. Tech
7.	Er. Geetanjali	Asst Professor	CSE	B.Tech, M. Tech
8.	Er. Kamini	Asst Professor	CSE	B. Tech, M. Tech
9.	Er. Nitika	Asst Professor	CSE	B. Tech, M. Tech
10.	Er. Sapna	Asst Professor	CSE	B. Tech, M. Tech
11.	Er. Vijay Guleria	Associate Professor	ME	B. Tech, M.E.
12.	Er. Raj Kumar	Asst Professor	ME	B. Tech, M.E.
13.	Dr. Devender Sharma	Professor	CE	Ph.D
14.	Er. Chander Bhanu Sen	HOD cum Associate Professor	CE	B. Tech, M. Tech
15.	Er. Chetan Sharma	Asst Professor	CE	B.Tech, M. Tech
16.	Er. Chetan Kumar	Asst Professor	CE	B.Tech, M. Tech
17.	Er.Ashish	Asst Professor	CE	B.Tech, M. Tech
18.	Er. Pooja Thakur	Asst Professor	CE	B. Tech, M. Tech
19.	Er. Piyush	Asst Professor	CE	B. Tech, M. Tech
20.	Er. Manisha Thakur	Asst Professor	CE	B. Tech, M. Tech
21.	Er. Pankaj Verma	HOD cum Associate Professor	EE	B. Tech, M.E.
22.	Er. Arnandeep	Asst Professor	EE	B. Tech, M. Tech
23.	Er. Navneet Thakur	Asst Professor	EE	B. Tech, M. Tech
24.	Er. Shefali Jamwal	Asst Professor	EE	B. Tech, M.E.
25.	Er. Ashu Suman	Asst Professor	EE	B.Tech, M. Tech
26.	Er. Abbay Mahajan	Asst Professor	EE	B.Tech, M.Tech
27.	Er. Anju Bala	Asst Professor	EE	B.Tech, M. E.
28.	Er. Sangeeta Thakur	Asst Professor	EE	B.Tech, M.Tech
29.	Er. Rajani Thakur	Asst Professor	EE	B.Tech, MBA
30.	Er. Manisha	Lecturer	EE	B. Tech
31.	Ms. Leena Jaswal	HOD cum Asst Professor	AS & H	M.Sc ,M.Phil (Physics), B.Ed
32.	Mr. Gaurav Sharma	Asst Professor	AS & H	MA (English) B.Ed.
33.	Mr. Maan Singh	Asst Professor	AS & H	M. Sc (Mathematics), B.Ed.
34.	Ms. Anchal Sharma	Asst Professor	AS & H	M.Sc (Chemistry), B.Ed.

“ ABHILASHI COLLEGE OF EDUCATION ”

Approved by NCTE and Affiliated to Sardar Patel University, Mandi
Accredited by NAAC with “B⁺⁺” Grade

Principal's Message



Dear Students

Welcome to Abhilashi College of Education, an institute of academic excellence and achievement, was established in 2003. It is amongst one of the finest colleges of the Sardar Patel University, Mandi. I welcome you to the noble teaching profession and to this pioneer institution accredited by NAAC with “B⁺⁺” Grade.

Here at Abhilashi College of Education, we impart an all round education so that our students may become multidimensional rather than unidimensional. In my view acquiring information is no longer the main focus of education, instead the main aim of education is to built the powers of human mind and spirit. We believe in providing our students an environment, rich in knowledge and supportive for their extracurricular interests. We aim to evaluate our students on the basis of their physical, mental, social, emotional and intellectual development. I am sure that all of you will shape into well versed nation builders, able to nurture the young minds. All odds, all challenges and all handicaps of life can be overcome with strong determination, persistent hard work, insurmountable patience and unshakable tenacity.” My best wishes to the new students entering Abhilashi College of Education.

Dr. Narbada Abhilashi
Principal, Abhilashi College of Education



In the year 2003, Abhilashi Educational Society established Abhilashi College of Education by taking a broader step towards Teacher Training Course (B.Ed.) after successfully completing the formalities of HP Govt., NCTE and SPU, Mandi and thus Abhilashi College of Education came into existence. It started with an annual intake of 100 seats which was later increased to 200 seats in the session 2007-08. Also in 2007 Abhilashi Educational Society started JBT Course (Abhilashi JBT Training Institute) which is now known as D.El.Ed. course with an intake of 50 seats.

Currently however, B.Ed. course has been made of two years duration with an annual intake of 200 seats for four basic units.

Abhilashi College of Education is located adjacent to NH-21 near Lal Bahadur Shastri Medical College & Hospital at Ner-Chowk in Distt. Mandi. From Mandi, it is at a distance of 14 kms and is well connected with transport facilities from all corner of the state throughout 24 hours a days. In the year 2023 the college is accredited with "B⁺⁺" grade by National Assessment and Accreditation Council for its quality education and best infrastructure.

Vision of the College:-

In accordance with the philosophy of "Sadguru Baba Hardev Singh Ji Maharaj and Sadguru Mata Savinder Hardev ji," the Endeavour of the college is:-

- To prepare and develop competent, innovative and farsighted teachers who can meet the requirements of global competitive world and contribute to academic excellence.
- To provide value based curriculum and dynamic academic environment for strengthening faith in humanistic, social and moral values as well as in Indian cultural heritage and democracy.
- To create facilities for imparting quality education and grow into a center of excellence in the field of teacher education.

Mission of the College:-

To imbibe in our prospective teachers, 4D's i.e. Dedication, Diligence, sense of Discrimination and Dignity of teaching profession through the development of:

- Head, Heart and Hand (3H's).
- Ability, Aptitude and Achievement (3A's).
- Communication Skills, Character and Computer Awareness (3C's).



“ Admission Criteria for admission in B.Ed. and D.El.Ed. Courses ”

As there are 200 seats in B.Ed. course and 50 seats in D.El.Ed. course, the admissions are made on the basis of merit in entrance examination/qualifying examinations. 85% seats in the B.Ed. course are reserved for Bonafied/Domicile Himachali candidates and 15% seats are reserved for the students of other states. Total management seats are 10% of the seats for Himachali Bonafied candidates. Out of 50 seats in D.El.Ed. course, 25 seats are filled up through subsidized category and 25 seats are filled up under Non- Subsidized category. Out of 50 seats, 10% seats are filled through Management Quota.

Bachelor of Education (B. Ed.):

Admission schedule for B.Ed. course is as per decided and finalized by Sardar Patel University, Mandi respectively. The candidates with at least 50% marks either in the Bachelor's Degree (Medical/Non-Medical /Commerce/Arts) and or in the Master's Degree in Sciences/Social Sciences/Humanity, Bachelor's in Engineering or Technology with specialization in Science and Mathematics with 55% marks or any other qualification equivalent thereto and 45% marks in case of SC/ST/OBC/Physically handicapped categories in the aforesaid Bachelor's/Master's Degree and 50% marks for Bachelor's in Engineering or Technology from a recognized University established by law in India are eligible for admission to the programme.

Diploma in Elementary Education (D. El. Ed.):

The admission to D.El.Ed. course is made by H. P. Board of School Education, Dharmshala on the basic of marks obtained in entrance test. The candidate with at least 50% marks in the higher secondary (10+2) or its equivalent examination are eligible for admission. The relaxation of 5% marks in minimum educational qualification is available to SC/ST/OBC/PHH candidates as per the rules and instructions of the State government, issued from time to time.



Attendance Norms

The minimum attendance of students is 80% for Theory courses and 90% for Practicum Field Attachments/ School Internship/ Practice Teaching. The students will be not allowed to appear in final exam due to short attendance.

Note: The students taking part in the national/state level sports/cultural competitions will not be marked as absent for their respective period of participation in above mentioned activities.

Fee Structure

Students are required to pay the amounts as prescribed by H.P. Govt., and Sardar Patel University, Mandi to the college for their admission to the different courses. In addition, University Examination Fee, Examination Related Fee and Continuation Fee will be charged extra from the students as per University norms.

Mode of Payment of Fee

- i. The first instalment of the admission fee will be collected from the students during admission time.
- ii. The students must deposit remaining fees to the college strictly within seven days of admission to the course.
- iii. All payments should be made in time and in exact amount as on date fixed by the institution.
- iv. All payments should be made in cash, no demand drafts or cheques will be entertained in any case.
- v. Once payment made, will not be refunded in any case to the students.
- vi. The security money paid to the college by the students will be refunded to them in the form of crossed cheque after the declaration of their final examination results by University.
- vii. The students will not be allowed to appear their examinations if any sort of balance payments if left on their account.



Leave Rules

No leave shall be sanctioned except under special circumstances, provided students fulfil 80% of attendance condition. The leave to the students shall be sanctioned only by the Principal on the recommendation of the concerned Head of the Department/ class incharge.





Dress Code

Dress code is one of the integral part of discipline which any institution enforces to maintain its dignity and standards. The dress code will be informed to the students before start of classes / session by the college.

NOTE: Dress code is compulsory and any student not abiding by it, will be subjected to a fine of Rs. 10/- per day.



General Information and Code of Conduct

- i. Students should maintain the decorum and status of the college.
- ii. Students have to follow all the directions issued by the college from time to time.
- iii. Students have to maintain strict discipline during their course in the college premises.
- iv. If any student found to be in disciplined, a strict action will be taken against him/her.
- v. Students' cooperation is expected to maintain decorum of the college.
- vi. Any information supplied by the student to the college, if found incorrect, his/her candidature will stand cancelled.
- vii. Students have to attend morning assembly in the college premises every day on compulsory basis. Otherwise, a fine of Rs. 5/- will be charged from the absentees.
- viii. Students not following the dress code will not be allowed to attend their classes on that particular day.
- ix. Students have to pay all the amount on their own required for the purpose of buying articles/objects needed for practical work/assignments.
- x. Students have to pay double fine in case they cause any damage to the college property.
- xi. Any dispute/problem regarding academic and co-academic activities will be redressed by the society/Principal.
- xii. Students have to follow all the orders/instructions forwarded by the Principal.
- xiii. All the complaints and suggestions will be valid if written in Complaint and Suggestion Register. Verbal complaints will Not be entertained in any case by the College Administration.
- xiv. Students will have to submit before admission an undertaking on the prescribed form given in this prospectus.
- xv. The students will not claim for the refund of fees once paid in any case what so ever.
- xvi. If the course is being discontinued for any reason or if the student drop out of the course for any cause, no claim for refund of fees shall be considered.
- xvii. The admission of the student is not transferable in any case.
- xviii. If the students take part in politics or any other anti-social activities, the college administration has discretion to cancel his/her admission or prescribe any other punishment.
- xix. Mobile phone are not allowed in college premises as well as in classrooms. A strict action will be taken against the defaulters.



List of Staff in Abhilashi College of Education

S.N.	Name	Designation	Educational Qualifications
1.	Dr. Narbada Devi	Principal	M.A (Economics & Education), Ph.D. (Education)
2.	Ms. Sapna Goel	Vice Principal	M.Sc. (Math), M.Ed., M.Phil., (Edu), PGDHE, Ph.D. (Education)
3.	Dr. Devender Kumar	Asst. Professor	M.A. (Pol. Science), M.Ed. Ph.D., (Education)
4.	Dr. Nisha Devi	Asst. Professor	M.A. (English & Economics), M.Phil., UGC-NET, Ph.D.(Education)
5.	Dr. Neelam	Asst. Professor	M.Sc. (Botany), M.Ed., UGC-NET/JRF, Ph.D.(Education)
6.	Dr. Sita Devi	Asst. Professor	M.Sc. (Micro Bio), M.Ed., M.Phil., SET (LS) UGC-NET/JRF
7.	Dr. Neelam Kumari	Asst. Professor	M.A. (Public Admin), M.Ed., Ph.D. (Education)
8.	Dr. Surjeet Singh	Asst. Professor	M.Ed., Ph.D. (Music Vocal)
9.	Ms. Monika Kumari	Asst. Professor	M.Sc. (Chemistry), M.Ed., UGC-NET (Education)
10.	Mr. Vijay Kumar	Asst. Professor	M.A. (Education), M.Sc.(Biotech.), UGC-NET (Education)
11.	Mr. Roshan Lal	Asst. Professor	M.A. (Pol. Science), M.Ed., Ph.D.,(Education) Pursuing
12.	Mr. Atul Kaushal	Asst. Professor	M.Sc. (Physics), M.Ed., Ph.D. (Education) Pursuing
13.	Ms. Jyoti	Asst. Professor	M.Ed., M. Com. O level course, Ph.D. (Education) Pursuing
14.	Ms. Karuna Sharma	Asst. Professor	M.A. (Economics), M.Ed., Ph.D. (Education) Pursuing
15.	Mr. Arun Kant	Asst. Professor	M.A. (English), M.Ed., DCA, Ph.D. (Education) Pursuing
16.	Mr. Avinash Sharma	Asst. Professor	M.Sc. (Physics), M.A.(Education)
17.	Ms. Sunita Devi	Asst. Professor	M.A. (Math & Hindi, M.Ed., Ph.D. (Education) Pursuing
18.	Ms. Sudiksha Kumari	Asst. Professor	M.A. (Hindi & English), M.Ed.
19.	Ms. Suman	Asst. Professor	M.A. (History & English) M.Ed.
20.	Mr. Ranjeet Singh	Asst. Professor	M.Sc. (Physics) M.Ed. M.Phil.
21.	Mr. Ramesh Chand	Asst. Professor	M.P. Ed., M.Phil. (Physical Education), Diploma in Education
22.	Ms. Neelam	Asst. Professor	MA (Pol.Science), M.Ed., UGC-NET (Education)
23.	Ms. Bandana	Asst. Professor	M.Ed. UGC NET (Education)
24.	Ms. Sumana Devi	Asst. Professor	M.A. (Music) B.Ed.
25.	Ms. Reena Kumari	Asst. Professor	M.A. (Sociology& Education)
26.	Mr. Thalia Ram	Asst. Professor	M.A. (Pol. Science & Education)
27.	Mr. Padam Singh	Asst. Professor	M.A, (Hindi) B.Ed.
28.	Ms. Asha Kumari	Asst. Professor	M.A. (Economics & Education)
29.	Ms. Indu Thakur	Asst. Professor	M.A (English) & M.Ed.
30.	Ms. Kiran Devi	Asst. Professor	B.F.A Diploma in Fine Art and M.F.S Pursuing
31.	Ms. Deepa Sagar	Asst. Professor	M.A. (Hindi), M.A. (Education)

“ABHILASHI POST GRADUATE INSTITUTE OF SCIENCES”

Affiliated to Sardar Patel University, Mandi (HP)



Abhilashi Education Society by taking a step further started professional courses in basic sciences. In the year 2010 Abhilashi Education Society, got affiliation from H.P.U. Shimla to start M.Sc. Botany and Chemistry as a part of Abhilashi P.G. Institute of Sciences, now affiliated to Sardar Patel University, Mandi (H.P.) recognized by UGC, New Delhi. The Institute is providing high class infrastructure, well equipped laboratories, quality education and extracurricular activities. Institute has been giving excellent results in University Examinations and its students are appearing in University merit list every year.

COURSE OFFERED:

Sr. No.	Name	Duration	Total Seats
1	M. Sc Chemistry	2 years / 4 semester	40
2	M. Sc Botany	2 years / 4 semester	40

Eligibility for Admission to M. Sc Courses:

Bachelor's degree of a University established by law in India in 2nd division or with at least 45% marks (40% in case of SC/ST candidates) or Honors in the subjects concerned.



Basis of Admission

The admission to these courses will be made strictly on the basis of marks obtained in the Entrance Test conducted by HPU/SPU and shall be open to all subject to the reservation approved by the University. The merit will be determined on the basis of competitive examination (written test and past academic record of the candidate).

The minimum qualifying marks of the entrance test will be 35% (in case of SC/ST candidates, the minimum qualifying marks shall be reduced until the full SC/ST quota for admission has been exhausted) for calling the candidates for interview/admission.

Department of Chemistry

The Department of Chemistry was established as full-fledged Department of Abhilashi PG Institute of Sciences in the year 2010, affiliated to Sardar Patel University, Mandi.

The Department aims at providing the best learning resources to its students and researchers in Chemical Sciences. The Department runs M.Sc. degree program in three core specializations: i.e. Inorganic, Organic and Physical Chemistry. The postgraduate program in Chemistry has been intended to develop skillful manpower in the field of these disciplines. The high quality of education prepares the students to meet the requirement of the global demand of the trained manpower in research / industries and equips them to outshine as a new generation professionals to face the challenges of the twenty first century and to reach the newer heights of excellence in their academic pursuits. The curriculum is a blend of the conventional and the radical and is strictly according to the HPU/ SPU syllabus chart. The labs and central digital library of the department are updated regularly to keep up with the growing demands and the challenging trends of the industry and the research laboratories.

Key Features of the Institute:

- Top placement of students with good salary package.
- NET/SLET/GATE exclusive study package.
- High class animation and video teaching.
- PDP (Personal development Programme) classes for preparation for interviews and personal grooming.
- Special programmes viz. invited talks/ seminars/science exhibitions/industrial visits.
- The tie-ups with leading companies and research institutes.



Department of Botany

The department of Botany was established in the year 2010 as a department of Abhilashi P.G. Institute of Sciences affiliated to Sardar Patel University, Mandi. The aim of the department is a holistic development and academic excellence to contribute effectively to the understanding of the subject, to develop an aptitude towards science and nature, to equip the students with the basic skills in identifying and labeling different plants, and to impart quality education in the field of Botany enabling our students to confidently face the job market.

To sensitize the students towards the need for keeping the environment clean and conserve our natural resources. Botany is the scientific study of the physiology, structure, genetics, ecology, distribution, classification, and economic importance of plants. It includes the study of morphology, anatomy, physiology, biochemistry, genetics, and their role in maintaining the ecosystems. Botanists study how plants evolve and adapt to changing climates and environments and also how they interact with other organisms.

In addition to teaching, the faculty members are also engaged in research and publications that have added immense value to the academic milieu. They counsel the students to ensure their multi-dimensional development. The principal focus of the department lies on the areas like plant physiology, plant biochemistry, stress physiology, plant nutrition, cancer chemoprevention using natural plant products, and mycorrhizal biology. According to Affiliated University curriculum, each student is assigned a project in 3rd semester and goes until 4th semester. Project work may be theoretical / field-based. Human being is inherently connected with nature. In the process of evolution, we are continuously degrading our environment. However, these become a life-affirming need to take strict actions for safeguarding our surroundings not only for ourselves but also for our future generations. For this, it is important to inculcate, cognize and perception about environmental issues in the youth who are our torch-bearers into the future. Institute also organizes trip to Mushroom research / cultivation center to become familiarize with mushroom cultivation technology. Field trip to local/ tribal communities to survey, document and explore information on plant people relationship to preserve indigenous knowledge and for sustainable development.

List of Faculty in Abhilashi PG Institute of Sciences

Sr. No.	Faculty Name	Designation	Qualification
Department of Botany			
1.	Mrs. Dimple Kumari	HOD & Assistant Professor	M.Sc., M.Phil, SET
2.	Dr. Natasha Saini	Assistant Professor	M.Sc., Ph.D. NET
3.	Dr. Sapna	Assistant Professor	M.Sc., Ph.D. NET
4.	Dr. Suman Sanju	Assistant Professor	M.Sc.(Gold Medalist), M.Phil, Ph.D.
Department of Chemistry			
1.	Dr. Anushri Gupta	HOD & Assistant Professor	M.Sc., M.Phil, Ph.D.
2.	Dr. Kanchan Sharma	Assistant Professor	M.Sc., Ph.D
3.	Dr. Deepika Gautam	Assistant Professor	M.Sc., Ph.D.
4.	Dr. Sunali Gupta	Assistant Professor	M.Sc., M.Phil, Ph.D.

“ Abhilashi College of Pharmacy ”

Approved By: HP Govt., AICTE, PCI and Affiliated to HPTU Hamirpur

Principal's Message



Dear Students,

Opportunity before us is immense and the task is onerous. Our esteemed institute Abhilashi College of Pharmacy has committed itself to play its humble role in the country's march towards prosperity and global leadership by imparting world class education to its students in the disciplines of Pharmacy.

Abhilashi College of Pharmacy has been giving outstanding results since its inception. Our students have got placed in Govt. hospitals, administration i.e. Drug Inspectors, in different reputed Pharmaceutical companies like Alembic Pharmaceuticals, Baddi, Ratchet Pharmaceuticals Baddi, Macleods Pharma Baddi, Sun Pharma, Gurgaon, Cipla Baddi etc. It is only due to the dedicated efforts of its faculty, staff, students, management and all other stakeholders. Abhilashi College of Pharmacy is an ideal institute for producing world class Pharmacists.



Aspiring brilliant students are invited to the portals of this institute beyond which awaits the gateway to highly competitive, exciting and rewarding careers. I whole heartedly welcome all the aspiring and brilliant students to join this institute and assure them a highly exciting and rewarding professional career.

Prof. (Dr.) Rajender Guleria
(M. Pharm, Ph.D)
Principal, ACP

“ Abhilashi College of Pharmacy ”



INTRODUCTION:

Abhilashi College of Pharmacy is approved by PCI/AICTE and H.P. Govt. This college is affiliated to H.P. Technical University, Hamirpur. It is the first to offer professional education in the field of Pharmaceutical Sciences in the Himachal Pradesh. Since 2006 the Institute has constantly worked towards raising the academic standards. In pursuit to offer the best technical infrastructure & skills to the students, the Institute has grown technically sound with state-of-art laboratories with hi-tech equipments, the best infrastructure in the region for academics and research. **“Growth in every sphere of activity”**.

In keeping with its objective of providing the best possible pharmaceutical education, the College has built up a strong infrastructure. This comprises of highly knowledgeable faculty, most of whom hold doctorates and

facilities that enable students to gain a contemporary education. Continuous interaction with industry is maintained to ensure that the learning program remains relevant to the changing trends in pharmaceuticals. As an established and highly esteemed institute of Himachal Pradesh, Abhilashi College of Pharmacy maintains an upmost academic standard, incorporated with the conduct of discipline, thereby achieving remarkable and excellent results. We firmly believe that technical education is the key to a nation’s progress. Thus, we take it as our bounded duty to provide the best academic training, a student can possibly get. The institution endeavors to comfort the students with all the necessary knowledge and skills to become truly successful in the chosen field. In whatever career a student may choose to take, hard work and discipline are the sure roads towards success. As a educational institution, we will support students in achieving those golden ambitions and also ensure that their stay in the college is meaningful.



Dr. R.K. Abhilashi, The Chairman of the Institute felt the need of training professionals in the field of pharmaceutical Sciences and his vision took the shape of ACP. In pursuit to offer the best technical infrastructure & skills to the students, the Institute has grown technically sound with state of- art labs with hi-tech equipments, the best infrastructure in the region for academics and research.

Bachelor of Pharmacy (No. of Seats - 100 per year)

Course Structure: Pharmacy council of India (PCI) recommended and HPTU approved syllabus is being adopted to acquire professional skill in the field of pharmaceutical education

Eligibility Criteria: HPCET (Conducted by HPTU, Hamirpur) 10+2 with 45% in PCB/PCM & 40% in PCB/PCM & 40% in case of reserved category.
Lateral Entry: D. Pharm with 50% (General) 40% (SC/ST).

Pharmacy Departments

Department of Pharmaceutical Chemistry:

The department of pharmaceutical chemistry is one of the central important branches of the Institute. It is equipped with state of the art facilities to undertake academics in Bachelor of Pharmacy course. In the frontier area of phytochemical research, the focus will be laid on isolation, characterization and evaluation of biological activities both by in-vitro and in-vivo models. Analysis of drugs and pharmaceutical chemicals forms the backbone of research and development in pharmaceutical industry.



Department of Pharmaceutics:

Pharmaceutics is concerned with the strategies by which biologically active compounds are presented to the body so as to elicit an optimal response. It includes the design; preparation and testing of drug delivery systems. The department has a Machine Room, Pharmaceutics Laboratory I (GP/DP Labs), Pharmaceutics Laboratory II (Unit Operation Lab), Pharmaceutics Laboratory III (Micro biology lab).



Department of Pharmacology:

The pharmacology department lays strong emphasis on research while imparting education in pharmacology, toxicology & other related subjects. A primary objective of Pharmacology is to investigate the fundamental aspects of molecular bioregulatory mechanism of the cell and understand how drugs act in order to develop new drugs for treatment of diseases. Toxicology examines toxicity and adverse effects of developed drugs, mechanisms of chemical agents and how they produce mutagenicity, carcinogenicity, mutagenic and neurological disorders.

Department of Pharmacognosy:

Pharmacognosy is the science that deals with medicine derived from natural sources. Pharmacognosy is a specific discipline that deals with the rapid developments in the knowledge and utilization of medicinal substances of biological origin (plant, microorganism and animal products) used for human and veterinary purposes. This subject provides information about the principles and procedures used in the identification,

authentication, extraction and isolation of active constituents by chromatography techniques, purification and development of herbal formulations and assay methods for the isolated constituents. Focus is also put on pharmacopoeial regulations, ICU, EU guidelines and principles of good manufacturing practices. The Pharmacognosy lab is equipped with Projection microscope, Soxhelt apparatus, Clevenger's apparatus, Stage micrometer and oculometers, Hot air oven, together with many crude drugs, charts and models.



Central Instrumentation Room Facility:

The department focuses on training the graduate students on how to use the modern and newer instrumental analytical techniques such as UV-Visible Spectroscopy, Fluorimetry and Flame photometry, Gas Chromatography, Binocular Microscope. Special emphasis is laid on the implementation of good laboratory practices and analytical skills. The department is actively involved in developing new analytical method and their validation, characterization and quantitative estimation of possible impurities in various dosage forms.



Classrooms: All the classrooms are spaciouly designed and we well furnished with necessary technical teaching aids like OHP, Slide Projectors, LCD Projector, Laptop and power supply.

Seminar Hall: The Institute passes a Seminar Hall with seating capacity of 300 people. The hall plays host to guest lectures, seminars and various presentations.



Library: The college library has a rich collection of printed as well as electronic resources which include:- Book including for particular topics or subjects as well as Reference books like dictionaries, encyclopedias, yearbooks, etc. National and International Journals & Magazines.



Database and Audiovisual Material

Computer Facilities: Keeping in view the increased emphasis on technology, the Innovative College has developed computer lab with broad-band connection. The lab is equipped with sufficient number of computers with the latest configuration and software's. In addition, we also have our own internet facility through local ISP.



Wi-Fi facility is also available

Hostel: The hostel rooms for students have provision of 24 hours power back up with wireless internet connectivity and provide a professional ambience for work. There is centrally located dining hall; the food prepared is a mixture of Indian & continental. The hostel is managed by student's body, with the help of an advisory body of the College. Besides these facilities, there is a T.V. lounge, a gymnasium and facilities for Indoor games.



Sports facilities: A centrally located indoor stadium is being developed to provide facilities for all indoor games, such as table tennis, badminton, carom and chess. The campus has also been facilities with a widespread outdoor area for cricket, volleyball and football.



Canteen: The College also possesses a neat and clean canteen in which all types of food is being served.



Museum: The College possesses a museum exhibiting more than 100 crude drugs, herbarium sheets, botanical specimens & charts of drugs & plants, colored slides of medicinal plants, patent medicines & containers of common usage in medicines.

Training and Placement Cell: The Placement Cell constantly keeps in touch with the Industry to ascertain the technology advancement and Plans well in advance for bridging any gap in addition to what students learn in their curriculum. The success of the placement Cell is evident from our alumni occupying positions at the best opted for companies in the country. The students are provided the platform for developing interpersonal, technical and business skills, so that they Can face the global challenges of today and the future.

Career in Pharmacy:

- Production & Manufacturing
- Research & Development
- Quality Control/Quality Assurance
- Marketing
- Hospital Pharmacy
- Forensic Pharmacy
- Clinical Trials
- Community Pharmacy
- Academic & Research
- Regulatory Affairs / IPR Opportunity.





List of Teaching Staff (ACP) in Abhilashi College of Pharmacy

S.No	Name of Faculty member	Designation	Qualification	Specialization
1	Prof. (Dr.) Rajender Guleria	Principal-cum-Professor	Ph.D	Pharmaceutics
2	Dr. Abhishek Soni	Associate Professor	Ph.D	Pharmaceutics
3	Mr. Pratap Singh	Associate Professor	M. Pharmacy	Pharmacology
4	Ms. Swati Sharma	Associate Professor	M. Pharmacy	Pharm. Chemistry
5	Ms. Preeti Aneja	Associate Professor	M. Pharmacy	Pharmaceutics
6	Ms. Susheela Kumari	Associate Professor	M. Pharmacy	Pharmacology
7	Ms. Kiran Kumari	Associate Professor	M. Pharmacy	Pharmaceutics
8	Ms. Pooja Sharma	Associate Professor	M. Pharmacy	Pharmaceutics
9	Ms. Swati Thakur	Assistant Professor	M. Pharmacy	Pharm. Biotechnology
10	Ms. Vandana	Assistant Professor	M. Pharmacy	Pharmaceutics
11	Ms. Nancy Sharma	Assistant Professor	M. Pharmacy	Pharmacology
12	Ms. Shivali	Assistant Professor	M. Pharmacy	Pharm. Chemistry
13	Ms. Palvi Sharma	Assistant Professor	M. Pharmacy	Pharm. Chemistry
14	Mrs. Supriya Sharma	Associate Professor	M. Pharmacy Ph.D. Pursuing	Pharmacognosy
15	Ms. Ankita Gupta	Assistant Professor	M. Pharmacy	Pharmacognosy
16	Ms. Preeti Chauhan	Associate Professor	M. Pharmacy	Pharmacognosy
17	Ms. Diskha Mehta	Assistant Professor	M. Pharmacy	Pharmacognosy
18	Ms. Babita Thakur	Assistant Professor	M. Pharmacy	Pharmaceutics
19	Mr. Mukul Sharma	Assistant Professor	M. Pharmacy	Pharm. Chemistry
20	Ms. Ravina Kumari	Assistant Professor	M. Pharmacy	Pharm. Chemistry
21	Ms. Mamta	Assistant Professor	M. Pharmacy	Pharmacology
22	Ms. Bhawana Devi	Assistant Professor	M. Pharmacy	Pharmacology
23	Mrs. Nisha Kumari	Associate Professor	M. Pharmacy	Pharm. Chemistry
24	Ms. Muskan Sharma	Assistant Professor	M. Pharmacy	Pharm. Chemistry
25	Mr. Vinay Thakur	Assistant Professor	M. Pharmacy	Pharmaceutics
26	Ms. Shalini	Assistant Professor	M. Pharmacy	Pharm. Chemistry
27	Mrs. Akriti Vyas	Assistant Professor	M. Tech (CSE)	Computer Science Engineering
28	Mr. Sushil Prasad	Assistant Professor	M.Sc, M.Phill., Ph.D. Pursuing	Mathematics
29	Ms. Ruma Devi	Assistant Professor	M.A. M.Ed	Communication Skills

“ Abhilashi College of Nursing ”

Approved by HP Govt, Recognized by INC (Delhi) and HPNRC Shimla
and affiliated to AMRU, Nerchowk

Principal's Message



The opportunities for a nurse are varied and limitless. A new professional nurse may choose between clinical practice, education, research, management, administration, occupational and industrial nursing. Abhilashi College of Nursing established in year 2015. The board of management of Abhilashi Group of Institutions & Abhilashi College of Nursing is committed to improvement of standards of nursing education & Research. The College of Nursing believes in quality education with a student first policy. To go along with our vision, the College is equipped with all modern educational technology, laboratories with adequate number of models, manikins, e-learning equipments, library with more then 4000 books, journal and e-journals and well qualified & adequate teachers and non-teaching staff and modern infrastructure with furniture and fixtures to carry out administrative and academic function. We also believe that there is no growth without research. We encourage our students to involve in research work and publications. The main advantage of joining Abhilashi College of Nursing is having attachment with 200 bedded multi specialty Zonal hospital, Mandi for clinical training, CHC & PHC for community training and other affiliated hospital within & beyond the state for super specialty training. We have the very good hostel facilities with all the necessary amenities to support the student's study & help the Nursing students to get 24 x 7 hours safe environment and round the clock security arrangements along with very good transport facility.

With this our motto is to provide quality education and training to maintain and develop highest standard of care for individual, hospitals and community, the college pledges to strive hard to become a center of excellence in nursing education & research. We welcome you to join hands with us and let's make a change in health care.

PRINCIPAL

Prof. (Dr.) Deepak Kumar Shandily
Ph.D (N), M.Sc. (N), RN, RM, MBA (HHA)

“ ABHILASHI COLLEGE OF NURSING ”

Abhilashi College of Nursing at Tanda, P.O. Balt, Mandi is established by the approval of Indian Nursing Council and state Govt. of Himachal Pradesh. The campus is surrounded by lush green fields, pine and oak forests thus becomes an ideal place for study in a clean health-oriented environment.

The college runs M.Sc. Nursing, B.Sc. Nursing, Post Basic B.Sc. Nursing, Diploma in General Nursing & Midwifery (G.N.M.) courses affiliated to AMRU, Ner Chowk and Himachal Pradesh Nursing Council Shimla respectively.

Vision:-

Excellence in nursing profession and nursing education through dedication and innovative research.

Mission:-

- To provide environment for achieving excellence in nursing education, clinical skills and nursing research.
- To create and generate conditions for quality education in nursing.
- To impart quality education in nursing through value- based, clinical based, practical and research based curriculum.
- To strengthen in humanistic, social and moral values.
- To plant nursing education, clinical skills and qualities of nursing leadership in minds of students for future development of the nation.

M.Sc. NURSING:

- a) *Admission criteria:* admission will based on the merit of entrance examination conducted by Atal Medical Research University.
- b) Duration: 2 years
- c) Seats: 25 (Community health nursing – 5, Mental Health Nursing – 5, Child Health Nursing- 5, OBG – 5, Medical-Surgical Nursing - 5)
- d) Affiliated to Atal Medical & Research University

e) Eligibility Criteria:

1. The candidate should be a Registered Nurse and Registered midwife or equivalent with any State Nursing Registration Council.
2. The Minimum education requirements shall be the passing of: B.Sc. Nursing/B.Sc. Hons. Nursing/Post Basic B.Sc. Nursing with minimum of 55% aggregate marks.
3. The candidate should have undergone in B.Sc. Nursing / B.Sc. Hons. Nursing / Post Basic B.Sc. Nursing.
4. Minimum one year of work experience after Basic B.Sc. Nursing.
5. Minimum one year of work experience prior or after Post Basic B.Sc. Nursing.

B.Sc. NURSING:

- a) *Admission criteria:* admission will based on the merit of entrance examination conducted by Atal Medical Research University.
- b) Duration: 4 years
- c) Seats: 30
- d) Affiliated to Atal Medical & Research University
- e) Eligibility Criteria:
 1. The minimum age for admission shall be 17 years on 31st December of the year in which admission is sought.
 2. Minimum education:
 3. 10+2 class passed with Science (PCB) & English Core/English Elective with aggregate of 45% marks from recognized board under AISSCE/ CBSE/ ICSE/ SSCE/ HSCE or other equivalent Board.
 4. Student shall be medically fit.
 5. Students appearing in 10+2 examination in Science conducted by National Institute of Open School with 45% marks.
 6. Student shall be admitted once in a year.

Note: i) Physics, Chemistry, Biology and English with Minimum of 50% aggregate marks.
ii) SC/ST Candidates, minimum aggregates required 45% for B.Sc. Nursing.

POST BASIC B.SC. NURSING

- a) *Admission criteria:* admission will be based on the merit of entrance examination conducted by Atal Medical Research University.
- b) Duration: 2 years
- c) Seats: 25
- d) Affiliated to Atal Medical & Research University, Ner Chowk.
- e) Eligibility Criteria:
 1. Passed GNM Course
 2. The minimum age for admission shall be 35 years.

GNM

- a) *Admission criteria:* Admission will be based on the counseling done by the DME & R, H.P.N.R.C. or competent authority.
- b) Duration: 3 years
- c) Seats: 30
- d) Affiliated to Himachal Pradesh Nurses Registration Council, Shimla
- e) Eligibility Criteria:
 1. Only female students admitted for this course.
 2. A candidate should have completed 17 years of age on 31st Dec. of the year of admission and should not be more than 35 years of age on the date of admission.
 3. Candidate should be medically fit.
 4. Candidate should have passed 10+2 examination or its equivalent preferably with PCB subjects with aggregate of 40% marks and other stream's with aggregate of 45% marks.
 - 5% relaxation in marks for SC/ST candidates.



CONDUCT & DISCIPLINE

- Students must be regular and punctual for lectures, demonstration, practicals and other academic exercise. They are required to attend all allotted working periods in each of the prescribed subjects.
- Students whose conduct or attendance or progress is not satisfactory will not be allowed to appear for the university or board examination, and also liable to leave the college.
- Any will full damage done to the property of the college, hostel & hospital will be dealt with as a breach of discipline.
- Students are required to abide by the rules & regulations laid by the hospital & college authorities. Violation of rules will entail disciplinary action.
- Students are required to maintain ethical and professional standards & behaviors.

ANTI RAGGING COMMITTEE

S.No.	Name	Designation	Committee
1.	Prof. Deepak	Principal	Chairperson
2.	Sh. B. R. Naik	Admin Officer	Member
3.	Ms. Nisha	Vice Principal	Member
4.	Ms. Priyanka	Asstt. Prof.	Member

ANTI- DISCRIMINATION COMMITTEE

S.No.	Name	Designation	Committee
1.	Prof. Deepak	Principal	Chairperson
2.	Ms. Pallavi	Asso.Prof.	Member
3.	Ms. Sunita	Asstt. Prof.	Member
4.	Ms. Archana Verma	Asstt. Prof.	Member

HOSTEL FACILITY

Very good homely environmental hostel facility is available; each room is furnished with necessary furniture and can accommodate 2 students and more spacious.



TRANSPORT FACILITY

College has separate transport facility as per students' strength.



NURSING FOUNDATION LAB

The Nursing foundation lab has various kind of multifunctional dummies, CPR mannequins (Cardio Pulmonary Resuscitation), equipments and articles for procedure demonstration where the students are systematically trained before the clinical posting.



MATERNAL AND CHILD HEALTH NURSING LAB

BEHIND EVERY STRONG WOMAN STANDS AN INSPIRATIONAL MIDWIFE

MCH laboratory is well prepared, well ventilated and spacious to improve the psychomotor skills of the students. The lab is equipped with simulators, various kinds of model and necessary

articles for procedure demonstration like assessment of antenatal mother, postnatal mother, and newborn and how to conduct the delivery etc.



COMMUNITY HEALTH NURSING

The community lab is well equipped with articles and community bags for preparing student nurses to work in urban and rural communities. The students are trained in the lab before field visit to carry out the procedures to treat minor ailments in a community set up.



NUTRITION LAB

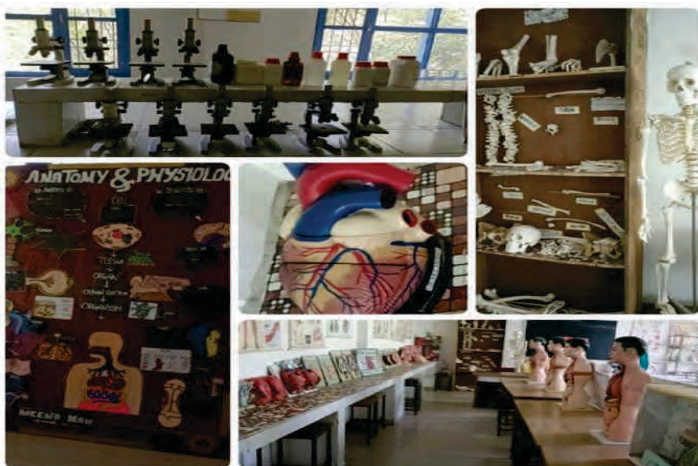
"OUR FOOD SHOULD BE OUR MEDICINE & OUR MEDICINE SHOULD BE OUR FOOD"

Nutrition lab is furnished with all kitchen articles; to impart basic knowledge of various methods of cooking for the healthy as well as for the sick.



PRECLINICAL LAB

The anatomy lab is well ventilated and spacious, organized with various models, charts on each body system and articulated and disarticulated skeletons. It is also equipped with other instrument, equipment required for Biochemistry and Microbiology analysis like fine quality microscopes etc.



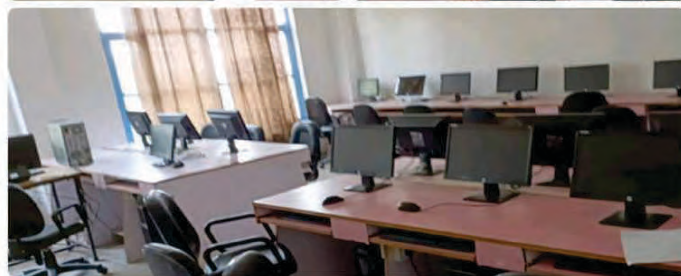
AV-AIDS ROOM

Audio visual are said to be gateway of knowledge Audio Visual Aid room possess all kinds of basic as well as advanced training aids like over head projectors, audio aid with mike, LCD projectors, slide and film strip projector etc, which helps the students to learn and improves their learning and teaching skills through visualization. Conferences, Seminars, Workshops, and Guest lectures are regularly organized in every Session.



COMPUTER LAB

The computer lab is spacious and well-planned with the latest hi-tech configuration of hardware and software with internet facility.



LIBRARY

"Books are Keys to Wisdom's Treasure; Books are friends, come, let us Read"

College has a splendid learning resource centre with over 3000 thousands books, journals, periodicals, CDs' and DVDs and internet facility with good seating arrangements and easily accessible to the teaching faculty and the students. The library is updated periodically with latest text books and journals.



CONFERENCE HALL AND MULTI PURPOSE HALL

Conference hall and Multi Purpose Hall, is ventilated and lightened. It is used as per the needs of the students and staff members for various purposes like Examination, celebration, Extracurricular activities and presentations. The academic life in Abhilashi college of Nursing goes beyond the curriculum and for such activities a centrally multipurpose hall is available. It also provides an ideal platform for guest lectures, seminar, workshop, conference, panel discussion, cultural and other functions of the college.



CLINICAL FACILITY

The key component of nursing education is clinical practice. Through continuous clinical experiences, our students are able to have a good understanding of the functioning of a hospital. Clinical sessions are supervised by trained medical & nursing professionals. Abhilashi College of Nursing is attached with Zonal hospital, Mandi, a 200 bedded Multi-Speciality Hospital.

We have affiliated hospitals for clinical training like Tanda medical college & hospital, Sai Ganga Ram hospital, New Delhi, for super specialty. Vidya Sagar Institute of Mental Health, Amritsar for Psychiatric training. CHC Ratti & PHC Leda for community training. Nursing students shall have enormous benefits by being trained in such a reputed institutions during their course

CENTRE FOR TRAINING AND PLACEMENTS

The department facilitates training programmed and offers opportunities for employment through campus interviews placements and counsel's students about future career prospects.

CANTEEN

Clean and hygienic food is available at affordable rates



SPORTS

Sports activities make the body healthy and strong. College has own playground (outdoor & indoor) provides sports facilities for both types, of games in the campus.



List of Students Selected in Government Hospitals

B.Sc. Nursing Batch 2019



SUMAN
NURSING OFFICER
AIIMS BILASPUR



AARTI
NURSING OFFICER
AIIMS BHATINDA



MINAKSHI
NURSING OFFICER
AIIMS GORAKHPUR



MONISHA
STAFF NURSE
SLBPMC & HOSPITAL
MANDI



SHABNAM
STAFF NURSE
SLBPMC & HOSPITAL
MANDI



SHEETAL
STAFF NURSE
GOVT. HOSPITAL
NURPUR



SHIVANI VERMA
CHO
HWC, MANDI



MANISHA
CHO
HWC, GHUMARWIN

Post Basic B.Sc. Nursing Batch 2021



KIRAN
NURSING OFFICER
AIIMS BILASPUR



SHAILJA
CHO
HWC, MANDI



KAJAL
STAFF NURSE
IGMC SHIMLA



PRAKRITI SOOD
STAFF NURSE
IGMC SHIMLA



KIRTI
STAFF NURSE
RGMCH HAMIRPUR



SHAGUN
STAFF NURSE
CHC GALORE



MINAKSHI
STAFF NURSE
K.V. MANDI



BHARTI
CHO
HWC, MANDI



SHAILJA
NURSING OFFICER
AIIMS BHOPAL

Post Basic B.Sc. Nursing Batch 2022



BINDIYA ABROL
CHO
HWC, CHAUNTRA



REETA
CHO
HWC, JANJHELI



PALLAVI
CHO
HWC, HAMIRPUR



HIMANSHU
CHO
HWC, HALYATER

FACILITIES AVAILABLE:

- The multi-storied academic building has well ventilated class rooms with modern sophisticated audio- visual equipments.
- There are five well equipped laboratories with adequate space as per norms to develop the technical skills through practical demonstration before the students have clinical practice on patients.
- College of Nursing has a splendid learning resource center with over 3000 books, journals, periodicals, CDs and DVDs and internet facility. The library is updated periodically with latest text books and journals.
- Adequate computers with internet facilities.
- Spacious auditorium having adequate seating capacity.
- Transport facilities are available for easy mobility of the students and staff.
- Our college offers protection to the new entrants from the menace of ragging.



LIST OF TEACHING STAFF IN ABHILASHI COLLEGE OF NURSING

S.No.	FACULTY NAME	DESIGNATION	S.No.	FACULTY NAME	DESIGNATION
1.	Dr. DEEPAK KUMAR SHANDILY M.Sc. Nursing (Mental Health Nursing, Phd	Principalcum Professor	13	MRS. JYOTI	Nursing Tutor
2.	Ms. NISHA M.Sc. Nursing (Community Health Nursing}	Vice Principal	14	MS. SWETA KUMARI	Nursing tutor
3.	MRS. PALLAVI M.Sc. Nursina (Child Health Nursing}	Associate Professor	15	MRS. NITIKA	Nursing Tutor
4.	MS. MINAL KUMARI M.Sc. Nursing (Child Health Nursing}	Assistant Professor	16	MRS. ANU DEVI	Nursing Tutor
5.	MS .SUNITA DEVI M.Sc. Nursing (Medical Surgical Nursing)	Assistant Professor	17	MRS. SHEELA	Nursing Tutor
6.	MS. PRIYANKA SHARMA M.Sc. Nursing (Medical Surgical Nursing)	Assistant Professor	18	MRS. DIKSHA	Nursing Tutor
7.	MS. BHANUPRIYA M.Sc. Nursing (Community Health Nursing}	Assistant Professor	19	MS. MANJULA	Nursing Tutor
8.	MS. ARCHANA VERMA M.Sc. Nursing (OBG)	Assistant Professor	20	MS. POONAM SHARMA	Nursing Tutor
9.	MS. SURUCHI M.Sc. Nursing (Community Health Nursing}	Nursing Tutor	21	MS. SUJATA SONI	Nursing Tutor
10.	MS. NIDHI M.Sc. Nursing (Mental Health Nursing)	Nursing Tutor	22	MS. MUSKAAN SHARMA	Nursing Tutor
11.	MS. ANKITA	Nursing Tutor	23	MS. PRIYANKA	Nursing Tutor
12.	MS. SAPNA	Nursing Tutor	24	MS. ARCHANA KUMARI	Clinical Instructor
			25	MS. KAIAL	Clinical Instructor
			26	MS. JYOTI	Clinical Instructor
			27	MS. SUJATA	Clinical Instructor
			28	MS. SHEPHALI WALIA	Clinical Instructor
			29	MS. SHABNAM	Clinical Instructor
			30	MS. RIYANSHU	Clinical instructor
			31	MS. SWATI BHATIA	Clinical instructor

Eligibility Criteria for Admission



Sr. No.	Name of the Course	Eligibility Criteria
1.	B.Tech. CE, CSE, EE	10+2 (Non-Med.) with 45% marks for Gen./ 40% for Reserve.
2.	B. Tech. (Lateral Entry) CE, CSE, EE	Diploma or B.Sc. (Non Medical) 45% for Gen./ 40% for Reserve.
3.	Diploma in CE & EE	10 th + PAT or 35% for all categories
4.	Diploma (Lateral Entry)	10+2 (Non-Medical/Vocational) / 2 years ITI
5.	ITI (Electrician, Sanitary Health Inspector, Solar Technician (Electrical), Fitter)	10 th
6.	B. Pharmacy	10+2 (Science) having 45% with HPCET Or 45% for Gen./ 40% for Reserve Category (without HPCET)
7.	B. Pharmacy (Lateral Entry)	D. Pharmacy /45% for Gen./ 40% for Reserve.
8.	B.Ed.	B.A/B.Sc/B.Com/or B.Tech. Specialization in science and Math with 50%/ or Master Degree in any subject with 55% for Gen B.A/B.Sc/B.Com/B.Tech. Specialization in science and Math with 45% or Master Degree in any subject with 50% for Reserve category and as per test merit conducted by SPU, Mandi
9.	D.El.Ed.	10+2 with 50% as per merit of test conducted by HPBOSE, Dharamshala
10.	M.Sc. (Chemistry Botany)	B.Sc. with 45% for Gen. and 40% for SC/ST or 20-24 credits in the concerned subject in B.Sc. degree
11.	B.Sc. Nursing	+2 (Medical) for Gen 45% and 40% for SC/ST and as per test merit conducted by AMRU, Ner Chowk.
12.	M.Sc. Nursing	B.Sc. Nursing/ Post Basic B.Sc with 55% of aggregate marks and as per test merit conducted by AMRU, Ner Chowk.
13.	P.B. B.Sc. Nursing	GNM and as per test merit conducted by AMRU, Ner Chowk.
14.	GNM	+2 any stream for Gen 40% and 30% for SC/ST

“ OTHER FACILITIES IN ABHILASHI GROUP OF INSTITUTIONS ”

Girls' Hostel

It was established in 2008 to provide a good and safe atmosphere for the girls. The hostel is at a distance of 100 mt from the College and is well connected by bus and other means of transport. The residents have access to medical aid and counseling within the hostel premises besides in-house laundry facilities.

A fully equipped kitchen provides wholesome vegetarian food and the hostel has an excellent library as well as TV and VCD facilities. Indeed, the concerned, facilities and atmosphere give a soothing feeling to the parents/guardian who leave their wards in our hostel. The Girls Hostel of Abhilashi College of Pharmacy is a “Sweet home away from home”!!!



Boys' Hostel

The New Boys' Hostel of the College is conveniently located close to the College, with all modern facilities and dedicated staff. The hostel has been designed not only to make the stay of the students comfortable, but also to make them feel at home, to boost their morale & to encourage them to study. The hostel mess has an ultra modern kitchen with state-of-the-art equipments to prepare the food hygienically & a beautiful dining hall. A library with adequate number of books and journals, attracts & encourages the students to study more. Power cut? No problem!!

Bank & ATM Facility

The State Bank of Patiala, State Bank of India and Punjab National Banks are available with their ATM's near the College Campus provides College students and staff as well as the general public, money management facility.

Conference Hall

The Institution managed by Abhilashi Group of Institutions also provides with a state of the art conference hall for carrying out small conferences and meetings. The fully air conditioned conference hall has a capacity of about 50 people and in it's quite and peaceful ambience is the ideal place for members to talk with other members and share everything from teaching methods, to current hot topics in the industry to requirements and expectations of corporate world from our institutions and what not.

The conference hall helps in providing a suitable place for conferencing, conferences, congresses, meetings, lectures and audio / visual presentations on a small scale.



Transport Facility

AGI has a fleet of 28 luxurious transport buses that pick and drop faculty members / students from different places. The transport facility is spread across various points in Ner Chowk, Mandi, Sundernagar, Rewalsar etc.



SPORT FACILITY AT ABHILASHI GROUP OF INSTITUTIONS

Every campus of Abhilashi Group has play ground to offer the various sports to its student's viz. Cricket, Football, Volleyball, Lawn Tennis, Basketball etc.

The main responsibility of the sports wing includes:-

- To ensure the communal harmony.
- To build high character values.
- To generate better performance attitude among the students.
- To increase the strength of the students against various torments of life.
- All round developments of the students.

MEDICAL FACILITY

In order to ensure the immediate medical help to the students, Abhilashi Group of Institution has medical dispensary in its campus needs of its students. The dispensary is kept open for 24 hours on all working days. Abhilashi group also has its own ambulance which is available for 24 hours for the students.

CAFETERIA

All the Institution of Abhilashi Group of Institution have the most preferred place to meet, eat, read and live life at full swing. The cafeteria of various institutes of Abhilashi Group serves all delicacies like fresh fruits, variety of fruit juices, milk products, crunchy and spicy snacks, chocolates, burgers, pizzas, and many other food items of demand. The cafeteria keeps the students energetic, happy, mentally frees and ready open attitude for study.



STUDENTS RECREATION CENTER

Abhilashi Group of Institution in its all campuses has developed a fully furnished recreation center for its students, boys and girls. This area is utilized by the students for their creative talks, healthy, discussions etc. The recreation center has a variety of indoor game like Table- Tennis, chess etc and has attached bathroom to give complete comforts to the students.

LIBRARY

The library of an institute is the sole of its life. The institute library is a scholars pride with a host of books on Engineering, Managements, and Commerce and inters disciplinary subjects. CDs, newspapers, journals, magazines, periodicals and other documented materials are available for the students as well as faculty members.



E-LIBRARY

In order to provide the instant and hi-tech help to the students Abhilashi Group of Institution has created an E-library in its T.R. Abhilashi Memorial Institute of Engineering and Technology which gives its access to its students around 2989 e-books. Students may prepare notes, get print outs and download the books for their study at home.

VARIOUS CELLS AND IT S FUNCTIONS

Abhilashi Group of Institutions have established various cells and committees to bring and ensure the perfect harmony in its campuses and zero tolerance towards any kind of meance

1. Proctorial Cell:-

- In order to maintain discipline in the premises of the institutions, proctorial cells have been established in each of institutions of Abhilashi Group. The responsibilities of the proctorial cell includes the following:
- Enforce discipline in the premises.
- Attendance monitoring in the confuction with the exam cell and follow up action to ensure the regularity and punctuality among the students.
- Act as internal flying squad during examinations.
- Taking action against cases occurring outside the campus involving our students, only when brought to knowledge of the proctorial cell.

2. Mentors:-

In order to keep the parents update about the progress of their ward, here at Abhilashi Group we have very unique system of operation. As we have made mentors committee and every teacher has been given the responsibility of his/her 20 students who regularity keep informing their parents about the attendance, progress in examination etc to the parents.

3. Examination Cell:-

Function of the examination cell is to ensure the smooth functioning of the internal as well as external examinations.

Training & Placement Cell:

- Abhilashi Group of Institutions have a very active Training & Placement Cell who takes all case of its students for their job after the completion of their course.
- Placement Cell of Abhilashi Group makes sure that it produces plug and play students for the market and every student masters the required standard of soft and technical skills needed by industries in this competitive period.
- Training and Placement cell is activity in contact with renowned companies in order to seek industry feedback on current ongoing courses in the college their feed back is implemented in the training of the students so that students faces fewer hurdles during their placement session.



Name of companies which have visited the campus

Here is the name of some companies who have visited our campus and conducted placement drives:-
Mankind Pharmaceuticals, Ranbaxy, IBM, HCL, Beta soft, Eureka Forbes, Indiasheters, Prolific India Ltm, SR Turbo Energies Pvt Ltd. Kapuria Technologies, Avntel, McNewtoo, Ispath Technologies, Metro and many more.

Cultural Activities at Abhilashi Group

Abhilashi Group of Institutions organizes various cultural and extra-curricular activities for its students at various occasions. T.R. Abhilashi Memorial Institute of Engineering & Technology of Abhilashi Group of Institution organizes its annual Tech-Fest every year where students show their engineering efficiencies by making models and working models in its exhibition. Abhilashi College of Pharmacy of Abhilashi Group of Institutions organizes its annual Pharamathon where a lot of Pharmacy related activates are exhibited

“ GENERAL RULES ”

Hostel Rule:-

Abhilashi Group of Institutions have developed in house accommodation for its students, boys and girls separately, in its every campus. Any student if willing to leave then it is mandatory to continue hostel facility for at least two semesters i.e. one year. No student will be allowed to vacate the hostel in middle of the year i.e. before 30th June. Students have to abide by the rules and regulation of the undertaking to this effect. Violation of rules of the hostel or being involved in any undesired, unsocial activities will invite rustication from the hostel as well as from the college. In such case either students or parents will have no rights to take the matter anywhere else including court of law.

REVISED/ AMENDED HOSTEL RULES AND REGULATIONS

Room Allotment

- Rooms will be allotted by the Warden according to the plan prepared by the Director / Warden (s) in the beginning of the session.
- Vacant accommodation shall be assigned to the students in order of their admission to the Institute.
- Allotment of hostel seats will be for the full academic year/semester. In case the resident wants to leave the hostel in the middle of the academic year, he/ she shall pay the hostel charges for the full academic year.
- Admission shall be sought afresh in every academic session. A student may be refused admission without conveying any reason.
- Institute reserves the right to move any hostel resident from one room to another if the need arises.
- The students must sign the undertaking and properly take charge of the material allocated to them in the room on prescribed form available with the Hostel Warden.

Behaviour and Discipline

- Hostel residents are prohibited from climbing over the fencing and boundary walls to get in or out of the Hostel campus.
- Hostel residents are not allowed to change rooms and transfer any furniture from one room to another room without the prior permission of the hostel warden.
- Any damage to hostel property must be reported immediately to the hostel warden.
- Residents will be charged for all damages due to negligence on their part.
- The residents are expected to be decently, dressed up in hostel premises.
- The residents are advised not to keep excessive cash, jewelry or other valuables with them.
- Any form of ragging is strictly prohibited. Any violation may lead to expulsion or any other punishment deemed fit by the Institute.
- Smoking, consumption of alcoholic drinks, drugs and any other intoxicating substances is strictly prohibited. Any resident found indulging in such practices shall be fined heavily and will be asked to vacate or will be expelled from the hostel *immediately without any refund of the hostel fees deposited by the student.*

- Acts of indiscipline, misbehavior, gambling or possession of weapons in the hostel premises including rooms shall be severely dealt with. A resident guilty of any of these violations shall be liable to expulsion or any other punishment deemed fit by the Institute.
- The management will view any activity of the inmates observed to be seriously prejudicial and detrimental to the smooth and peaceful functioning of the Institute's hostel, disciplinary action will be taken against those found guilty.
- Suggestion Box provided in the hostel to be opened every 15 days in the presence of Campus Administrator and Student representatives.
- Before leaving the hostel, every resident shall obtain clearance from the Warden and personally hand over the charge of the room and hostel property to the concerned authority.

Mess

- All residents shall have meals in the hostel's dining hall. They are not allowed to take food or mess utensils to their rooms.
- Cooking in the hostel rooms is strictly prohibited.
- Residents are not allowed to enter the kitchen.
- Complaints, if any, against the conduct of the contractors / servants may be made by the residents to the Wardens. No complaint about mess / canteen, etc. shall be entertained if the complainant himself is a defaulter.

Attendance and Leave

- It is obligatory on the part of the resident to be present in the hostel on all days except when they go home with the permission of the Warden.
- Attendance of residents in their respective hostels shall be taken twice every day at the time fixed by the respective wardens. Any resident not present at the time of attendance shall be liable to be marked absent for that day for which he / she should have prior permission or sufficient explanation and the same will be informed to their parents /guardians.
- *If any resident of the hostel wants to take leave from hostel, they will have to provide consent/ permission from their parents /guardians as well as from the Head of the Institute they are studying.*
- *Day outing* is allowed only for second Saturdays and 4th Sunday from 10: 00 am to 04:00 pm.

Visitors and Guests

- All visitors must make an entry in the visitor's register at the security post and provide all details as requested by guard before entering the campus.
- No guests shall be allowed to stay with the resident in the hostel.
- A day scholar is not permitted to visit or stay in the hostel without permission of warden.

Rent and Mess Charges

- Hostel rent, including mess charges, is to be paid at the beginning of each semester.
- Residents getting admission to hostel at any time during the month will be charged full fee for the month. The securities will stand lapsed after one year of leaving the hostel.
- In case of non-payment of dues in time or violation of any hostel rule by a resident, the Warden may get his / her room locked or opened for possession without any liability whatsoever. The belongings shall be transferred to the store and will only released after clearance of all dues within one month.

Test and Examination:-

- Each student shall take the respective examination to be conducted by the institute.
- Each student shall attend and complete the required course including the theory and practical as prescribed by the Himachal Pradesh Technical University, Hamirpur, Sardar Patel University, Mandi, Himachal Pradesh Takniki Shiksha Board Dharamshala, AMRU etc.
- At the end of the semester student had to maintain his /her attendance as minimum of 75%. If any student fails to maintain his /her attendance as 75% may be detained from the examination conducted by the University/ Board.
- All students admitted to the college will be under the complete control of the authority of the college or any other officer appointed by the college for the same and must behave in accordance with disciplinary rules of the institution as formed and notified by the Director from time to time.

Other general rules:-

- A candidate is supposed to furnish with actual information in the application form. Any false/suppressed information will invite his/her expulsion from the Institute.
- Students are required to make his/her identity card recent photograph & duly signed by Principal. Students are required to bring the identity card daily. On verification if identity card is not found in the possession of the students, Principal may not allow that student to attend the class.
- In case the identity card is lost, the student must give immediate information to the Principal in writing with proper reason of loss. A fresh identity card will be issued on payment fixed by the institution.
- Every student is supposed to attend 75% of classes (Theory, Practical) failing which he/she shall not be allowed to appear in final Examination.
- If the conduct of the student in their classes or in the premises of the College cause the disturbance in the academic atmosphere, the Principal may expel them and their fees will be forfeited.
- If the character of a student is found against the academic norms, Principal, is liable to take a strict action against them including fine.
- If for any reason the continuance of the students in the college, in the opinion of the Principal is detrimental to the best interest of the college, the Principal may ask student to leave the College without giving reason for his/her expulsion.

- During leisure time student must not loiter about in the College premises while the other classes are in progress, they should make use of the College library.
- Student will not be allowed to take part in politics. None of the student should communicate any information or write about any matter dealing with the administration of College to the press.
- No person will be permitted to address a meeting without the prior permission of the Principal.
- Non compliance of the rules of the College may also be dealt with suitable stringent action.
- College maintains a well equipped library. Students can take benefit of the book/journals provided under rules which can be ascertained from the Librarian.
- In the event of any dispute, court of Mandi (HP) shall be the competent court.
- Students are expected to take proper care of instruments, equipments, machines and other properties of the college. Students may be charged for loss or damage of college properties caused by his /her carelessness, negligence or misuse.
- Smoking is strictly prohibited in the Institution premises.
- Ragging in any form is strictly prohibited.
- The matter not covered by the existing rule will depend upon the discretion of the principal.
- Students residing in the hostel are to obey hostel rules (displayed on the notice board) & copy is available with the respective Hostel Supdt./Warden. Disobedience of any rule will be viewed very strictly.



अभिलाषी यूनिवर्सिटी लड़कियों की पढ़ाई में ट्यूशन फीस में देगी छूट

इस सत्र से लागू किए आदेश, चांसलर ने छात्रों के हित में लिया फैसला

हिमाचल प्रदेश, 22 अगस्त (वि.सं.) : प्रदेश में आई आरटी का समय में कई संस्थाएं राहत देने आगे आ रही हैं। अभिलाषी विश्वविद्यालय ने भी इस दिशा में पहल की है। अभिलाषी विश्वविद्यालय की छात्राओं को ट्यूशन फीस में देगी छूट। इस सत्र से लागू किए आदेश, चांसलर ने छात्रों के हित में लिया फैसला।

WED, 23 AUGUST 2023
EDITION: MANDI KESARI, PAGE NO. 2

आपदा राहत में अभिलाषी विश्वविद्यालय ने दिया 10 लाख रुपए का अंशदान

नेरचोक, 22 अगस्त (वि.सं.) : प्रदेश में आई आरटी का समय में कई संस्थाएं राहत देने आगे आ रही हैं। अभिलाषी विश्वविद्यालय ने भी इस दिशा में पहल की है। अभिलाषी विश्वविद्यालय की छात्राओं को ट्यूशन फीस में देगी छूट। इस सत्र से लागू किए आदेश, चांसलर ने छात्रों के हित में लिया फैसला।

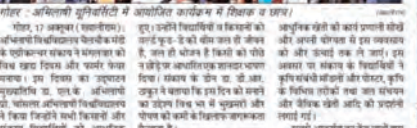


अभिलाषी विश्वविद्यालय के अध्यक्ष डॉ. आरके अग्रवाल (दोसरे से) ने 10 लाख रुपए का अंशदान राहत राशि के लिए प्रेषित किया।

नेरचोक : अभिलाषी विश्वविद्यालय, नेरचोक, मंडी व अभिलाषी प्रबंधन आचार्यशास्त्र प्रशिक्षण संस्थान सहित मेमोरियल शिवालय में मुख्यमंत्री राहत कोष के लिए एक बैठक का आयोजन किया गया।

प्राकृतिक खेती की उपयोगिता व कार्यप्रणाली पर डाला प्रकाश

अभिलाषी विश्वविद्यालय में प्राकृतिक खेती की उपयोगिता व कार्यप्रणाली पर डाला प्रकाश।



अभिलाषी विश्वविद्यालय में प्राकृतिक खेती की उपयोगिता व कार्यप्रणाली पर डाला प्रकाश।

अभिलाषी विश्वविद्यालय में प्राकृतिक खेती की उपयोगिता व कार्यप्रणाली पर डाला प्रकाश।

इंजीनियर्स दिवस पर कराई प्रतियोगिताएं

अभिलाषी विश्वविद्यालय में इंजीनियर्स दिवस पर कराई प्रतियोगिताएं।



मंडी में आयोजित सम्मेलन में अभिलाषी यूनिवर्सिटी के चांसलर को शिक्षा का संस्था ने किया सम्मानित

उत्कृष्ट कार्य करने पर डॉ. आरके अभिलाषी को हिम रतन अवॉर्ड

मंडी में आयोजित सम्मेलन में अभिलाषी यूनिवर्सिटी के चांसलर को शिक्षा का संस्था ने किया सम्मानित।



डॉ. आरके अभिलाषी को हिम रतन अवॉर्ड प्रदान किया गया।

आईटीईपी पाठ्यक्रम के अनुसार तैयार होंगे अध्यापक

आईटीईपी पाठ्यक्रम के अनुसार तैयार होंगे अध्यापक।



अभिलाषी विश्वविद्यालय के दस छात्र ड्राइंग मास्टर आर्ट एंड क्राफ्ट विषय के छात्रों को शिक्षा विभाग में मिली सरकारी नौकरी

अभिलाषी विश्वविद्यालय के दस छात्र ड्राइंग मास्टर आर्ट एंड क्राफ्ट विषय के छात्रों को शिक्षा विभाग में मिली सरकारी नौकरी।



टैकीकल फेस्टीवल में विद्यार्थियों ने प्रस्तुत किए रंगारंग कार्यक्रम

टैकीकल फेस्टीवल में विद्यार्थियों ने प्रस्तुत किए रंगारंग कार्यक्रम।



अभिलाषी कॉलेज में नेशनल कांफ्रेंस

अभिलाषी कॉलेज में नेशनल कांफ्रेंस का आयोजन किया गया।



एचपीटीयू के परीक्षा परिणाम में अभिलाषी कॉलेज के छात्रों का पर्यय

एचपीटीयू के परीक्षा परिणाम में अभिलाषी कॉलेज के छात्रों का पर्यय।



अभिलाषी विश्वविद्यालय स्कूल ऑफ फार्मसी में विश्व फार्मासिस्ट दिवस आयोजित

अभिलाषी विश्वविद्यालय स्कूल ऑफ फार्मसी में विश्व फार्मासिस्ट दिवस आयोजित।



अभिलाषी कॉलेज आफ फार्मसी में किया विद्यार्थियों का मार्गदर्शन

अभिलाषी कॉलेज आफ फार्मसी में किया विद्यार्थियों का मार्गदर्शन।



एग््रीकल्चर एक्सटेंशन ऑफिसर के भर्ती नियमों में संशोधन करना सरकार का सार्वजनिक कार्य

एग््रीकल्चर एक्सटेंशन ऑफिसर के भर्ती नियमों में संशोधन करना सरकार का सार्वजनिक कार्य।



28 from Mandi varsity get offer letters after campus placements

MANDI, APRIL 12 Final-semester students of BPharmacy, MPharmacy, MSc (Agriculture), and MBA courses of Abhilashi University, Chail Chowk (Mandi), were selected for positions in reputed companies across the country. Abhilashi University chancellor RK Abhilashi said the university had been organising continuous campus placement drives for the past week.

"Alps Communication Pharmaceuticals, Kala Amb, selected six students for the position of quality control officer from B Pharmacy," he said.

"Similarly, eight students were selected for the position of quality assurance officer from M Pharmacy. Five students were selected to work as production officers," he added.

"In the banking sector, IFM Coach selected six MBA students for various positions at Axis Bank, Kotak Mahindra, and Yes Bank. One student from MSc (Agriculture) was selected as horticulture consultant at Chail Hills, Solan, and another from the course was selected as a territory sales officer at Maple Orgetch India Private Limited," he added.

Abhilashi University director of admissions and placements Shammy Dugal said last week, 28 students from B Pharmacy and M Pharmacy from Abhilashi University and Abhilashi College of Pharmacy, Nerchowk, secured jobs at Macleods Pharmaceuticals.

"The selected students have been offered annual packages ranging from Rs 3 lakh to Rs 5 lakhs," Dugal said.—TNS



Students of Abhilashi University recruited during campus placement.

आयुर्वेद में बाल रोग व कारा चिकित्सा में स्पेशलिस्ट पीजी डॉक्टर तैयार करना अभिलाषी विवि 2023-24 सत्र के लिए भारतीय चिकित्सा पद्धति राष्ट्रीय आयोग आयुष मंत्रालय से 8 सीटों के लिए मिली मान्यता

विद्यार्थी संख्या में वृद्धि के बाद विद्यार्थी संख्या में वृद्धि के बाद आयुर्वेद में बाल रोग व कारा चिकित्सा में स्पेशलिस्ट पीजी डॉक्टर तैयार करने के लिए भारतीय चिकित्सा पद्धति राष्ट्रीय आयोग आयुष मंत्रालय से 8 सीटों के लिए मिली मान्यता।

आयुर्वेद में बाल रोग व कारा चिकित्सा में स्पेशलिस्ट पीजी डॉक्टर तैयार करने के लिए भारतीय चिकित्सा पद्धति राष्ट्रीय आयोग आयुष मंत्रालय से 8 सीटों के लिए मिली मान्यता।



आयुर्वेद में बाल रोग व कारा चिकित्सा में स्पेशलिस्ट पीजी डॉक्टर तैयार करने के लिए भारतीय चिकित्सा पद्धति राष्ट्रीय आयोग आयुष मंत्रालय से 8 सीटों के लिए मिली मान्यता।

बोर्डमान्यता कोर्स के लिए 60 सीटों की उपलब्धता

भारतीय चिकित्सा पद्धति राष्ट्रीय आयोग आयुष मंत्रालय से 8 सीटों के लिए मिली मान्यता।

हिमाचल भास्कर 17-03-2024

28 छात्रों को मैकिलोयड्स कंपनी में मिली नौकरी, तीन लाख का पैकेज

अभिलाषी विश्वविद्यालय के 28 छात्रों को मैकिलोयड्स कंपनी में नौकरी मिली है। इन छात्रों को एक साल का पैकेज मिलेगा, जो तीन लाख रुपये तक है।

अभिलाषी विश्वविद्यालय के 28 छात्रों को मैकिलोयड्स कंपनी में नौकरी मिली है। इन छात्रों को एक साल का पैकेज मिलेगा, जो तीन लाख रुपये तक है।

हिमाचल भास्कर 24-12-2023

अभिलाषी और तारिका विवि ने रैलिकॉम संघों को प्रशस्त करने पर किया एमप्रेशू

अभिलाषी विश्वविद्यालय और तारिका विश्वविद्यालय ने रैलिकॉम संघों को प्रशस्त करने पर किया एमप्रेशू।

अभिलाषी विश्वविद्यालय और तारिका विश्वविद्यालय ने रैलिकॉम संघों को प्रशस्त करने पर किया एमप्रेशू।

अभिलाषी विश्वविद्यालय ने होनहारों को बांटी डिग्रियां

चौथे दीक्षा समारोह में उपायुक्त अरिंदम चौधरी ने सम्मानित किए विद्यार्थी

अभिलाषी विश्वविद्यालय ने चौथे दीक्षा समारोह में उपायुक्त अरिंदम चौधरी ने सम्मानित किए विद्यार्थी।

अभिलाषी विश्वविद्यालय ने चौथे दीक्षा समारोह में उपायुक्त अरिंदम चौधरी ने सम्मानित किए विद्यार्थी।

परिवर्तन फेस्ट कार्यक्रम में एक से बढ़कर एक प्रस्तुति पेश कर बांधा समां

अभिलाषी यूनिवर्सिटी में गायक शिवजोत ने मचाया धमाल

अभिलाषी यूनिवर्सिटी में परिवर्तन फेस्ट कार्यक्रम में एक से बढ़कर एक प्रस्तुति पेश कर बांधा समां। अभिलाषी यूनिवर्सिटी में गायक शिवजोत ने मचाया धमाल।

अभिलाषी यूनिवर्सिटी में परिवर्तन फेस्ट कार्यक्रम में एक से बढ़कर एक प्रस्तुति पेश कर बांधा समां। अभिलाषी यूनिवर्सिटी में गायक शिवजोत ने मचाया धमाल।



अभिलाषी यूनिवर्सिटी में परिवर्तन फेस्ट कार्यक्रम में एक से बढ़कर एक प्रस्तुति पेश कर बांधा समां।

हिमाचल भास्कर 05-03-2024

परिभाषियों ने मौखिक और लिखित प्रस्तुतियों में बहुत रुचि के साथ भाग लिया

परिभाषियों ने मौखिक और लिखित प्रस्तुतियों में बहुत रुचि के साथ भाग लिया।

परिभाषियों ने मौखिक और लिखित प्रस्तुतियों में बहुत रुचि के साथ भाग लिया।

हिमाचल भास्कर 27-04-2024

मेधावियों को किया सम्मानित

मेधावियों को किया सम्मानित। छात्र जीवन में आती है बहुत सी कठिनाइयां; देवगन

मेधावियों को किया सम्मानित। छात्र जीवन में आती है बहुत सी कठिनाइयां; देवगन



मेधावियों को किया सम्मानित। छात्र जीवन में आती है बहुत सी कठिनाइयां; देवगन

हिमाचल भास्कर 07-04-2024

अभिलाषी विश्वविद्यालय के आठ छात्रों को नौकरी

अभिलाषी विश्वविद्यालय के आठ छात्रों को नौकरी मिली है।

अभिलाषी विश्वविद्यालय के आठ छात्रों को नौकरी मिली है।

हिमाचल भास्कर 07-04-2024

अभिलाषी में सजा इंटरनेशनल करियर फेयर

अभिलाषी में सजा इंटरनेशनल करियर फेयर। विदेशी टॉप यूनिवर्सिटीज में आगे की पढ़ाई के लिए छात्रों के लिए कंपसटेशन

अभिलाषी में सजा इंटरनेशनल करियर फेयर। विदेशी टॉप यूनिवर्सिटीज में आगे की पढ़ाई के लिए छात्रों के लिए कंपसटेशन

हिमाचल भास्कर 07-04-2024

कोर्स और फीस स्ट्रक्चर की पूरी जानकारी

अभिलाषी दार्पण 2024 पत्रिका का विमोचन, कल से शुरू होगा जागरूकता अभियान

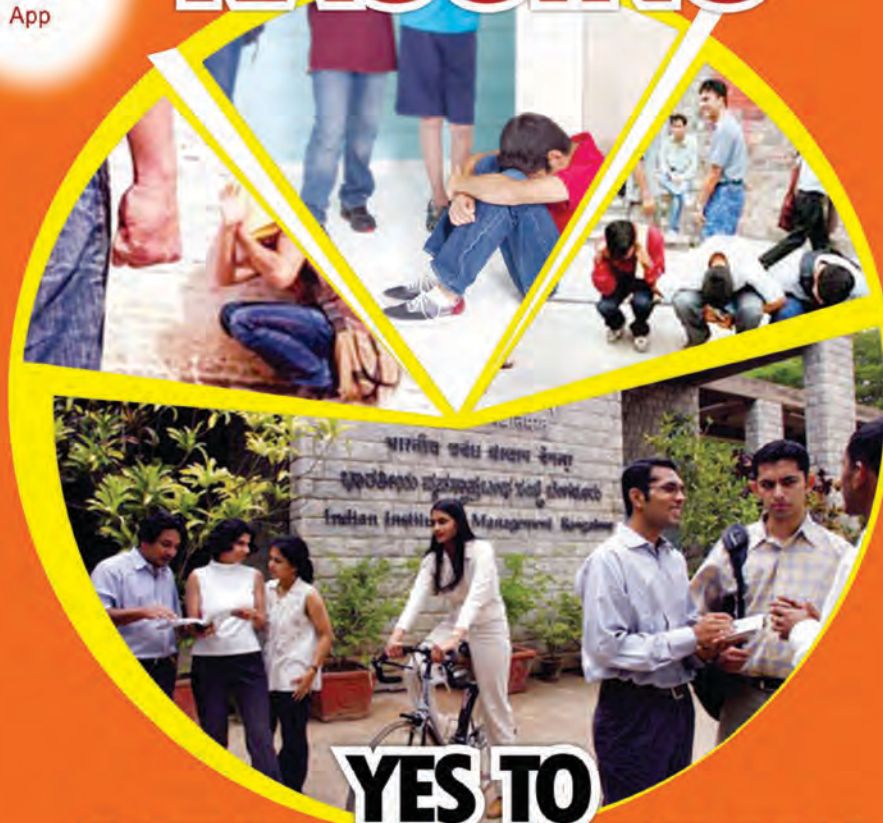
अभिलाषी दार्पण 2024 पत्रिका का विमोचन, कल से शुरू होगा जागरूकता अभियान

Download

**ANTI
RAGGING**

App

SAY NO TO RAGGING



YES TO JOYFUL CAMPUS

What is Ragging?

Any Act Resulting in:

- Mental/physical/sexual Abuse
- Verbal Abuse
- Indecent Behaviour
- Criminal Intimidation/wrongful Restraint
- Undermining Human Dignity
- Financial Exploitation/extortion
- Use Of Force

A STUDENT INDULGING IN RAGGING CAN BE:

- Cancellation of admission.
- Suspension from attending classes.
- Withholding/withdrawing Scholarship/Fellowship and other benefits.
- Debarring from appearing in any test/ examination or other evaluation process.
- Withholding results.
- Debarring from representing the institution in any regional, national or international meet, tournament or youth festival etc.
- **Collective punishment** : when the persons committing or abetting the crime of ragging are not identified the institution shall resort to collective punishment as a deterrent to ensure community pressure on potential ragger.



Immediately call
UGC Anti-Ragging Helpline
 1800-180-5522 (24X7 toll free)
 or send an e-mail to helpline@antiragging.in



MHRD

DEPARTMENT OF HIGHER EDUCATION
 MINISTRY OF HUMAN RESOURCE DEVELOPMENT
 GOVERNMENT OF INDIA



मान-विमान विमुक्तये

विश्वविद्यालय अनुदान आयोग
University Grants Commission
 quality higher education for all

COLLEGES AND COURSES

T.R. ABHILASHI MEMORIAL INSTITUTE OF ENGG. & TECH.

Approved by HP Govt., AICTE & Affiliated to HPTU, Hamirpur, HPTSB, Dharamshala
TANDA, P.O. BALT, DISTT. MANDI (H.P.)

B.TECH
(CE/EE/CSE)

B.TECH
(CE/EE/CSE) LATERAL ENTRY

DIPLOMA
(CE/EE)

DIPLOMA
(CE/EE) LATERAL ENTRY

Contact No. 01905-248191, Fax: 01905-248189

T.R. ABHILASHI PRIVATE ITI

Approved by DGT, NCVT, New Delhi & Affiliated to HPTSB, Dharamshala
TANDA, P.O. BALT, DISTT. MANDI (H.P.)

**ITI in ELECTRICIAN, SANITARY HEALTH INSPECTOR
SOLAR TECHNICIAN (ELECTRICAL), FITTER**

Contact No. 01905-248191, Fax: 01905-248189

ABHILASHI COLLEGE OF PHARMACY

Approved by HP Govt., AICTE, PCI & Affiliated to HPTU, Hamirpur
NERCHOWK, TEHSIL BALH, DISTT. MANDI (H.P.)

B. PHARMACY

B. PHARMACY (LE)

Contact No. 01905-242239, 01905-243339

ABHILASHI COLLEGE OF NURSING

Approved by HP Govt., INC, HPNRC, Affiliated to AMRU Nerchowk
TANDA, P.O. BALT, DISTT. MANDI (H.P.)

M.Sc. NURSING | B.Sc. NURSING | P.B. B.Sc. NURSING | GNM

Contact No. 01905-248539, 7807651239

ABHILASHI P.G. INSTITUTE OF SCIENCES

Affiliated to SPU, Mandi
NER CHOWK, TEHSIL BALH, DISTT. MANDI (H.P.)

M.Sc in CHEMISTRY & BOTANY

Contact No. 01905-243328

ABHILASHI COLLEGE OF EDUCATION

Approved by NCTE and Affiliated to SPU, Mandi
NERCHOWK, TEHSIL BALH, DISTT. MANDI (H.P.)

D.EL.Ed

B.Ed

*Accredited by
NAAC with "B++" Grade*

Contact No. 01905-243328, Fax: 0190-5243328

ABHILASHI

GROUP OF INSTITUTIONS



Dr. R. K. ABHILASHI
(Chairman)

98164-00520, 94180-06520

Dr. L. K. ABHILASHI
(Managing Director)

98167-00520, 94180-56520

Sh. NARENDER KUMAR
(Secretary)

98160-05139, 94184-53239

**FOR
CONTACT**

Email:

abhilashigroup@gmail.com

HELPLINE NUMBER

**01905-248191, 248198, 248194,
248539, 243328**